

# Ecosystem Health Report Cards

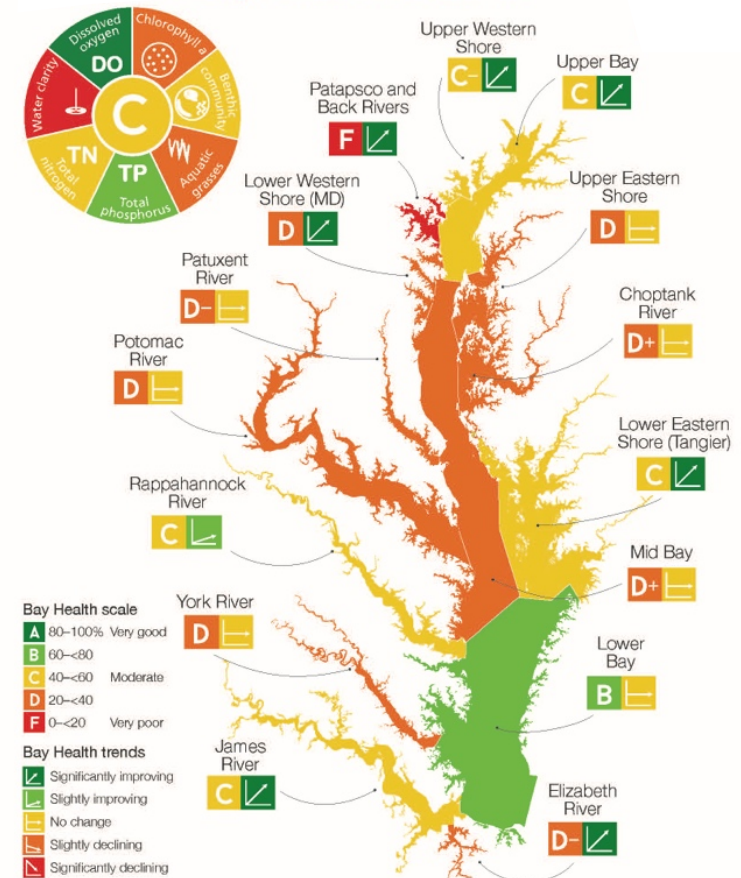
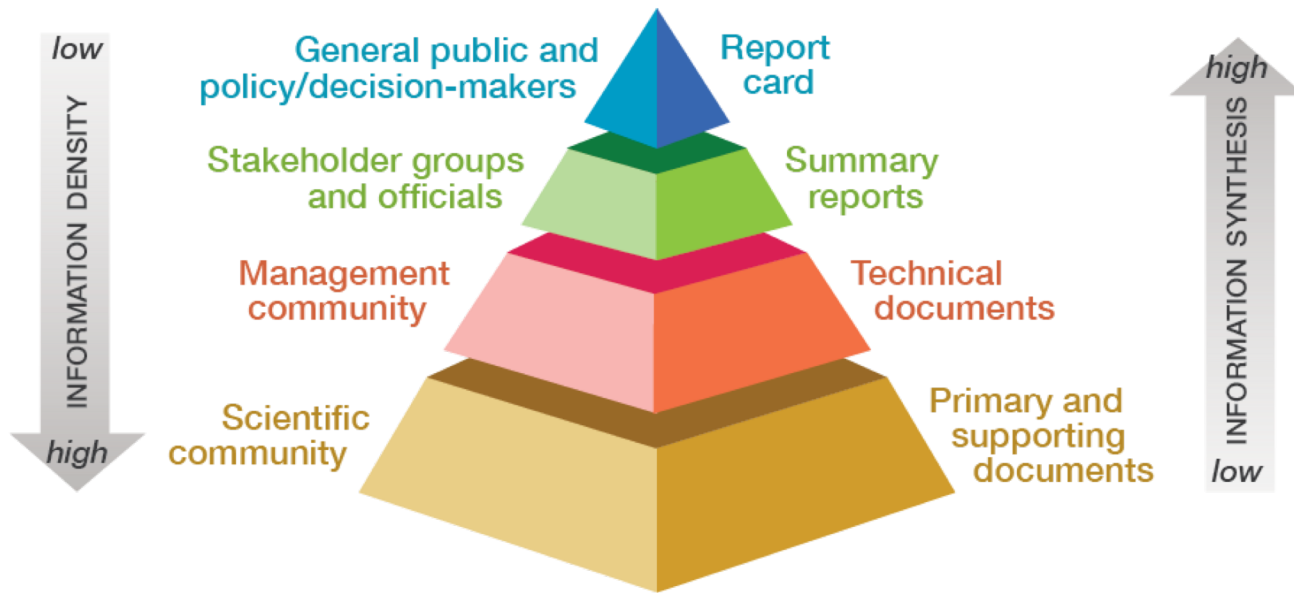
Stakeholder engagement in  
environmental decision making

Heath Kelsey  
Integration and Application Network  
University of Maryland Center for  
Environmental Science

OHH Webinar  
February 25, 2020

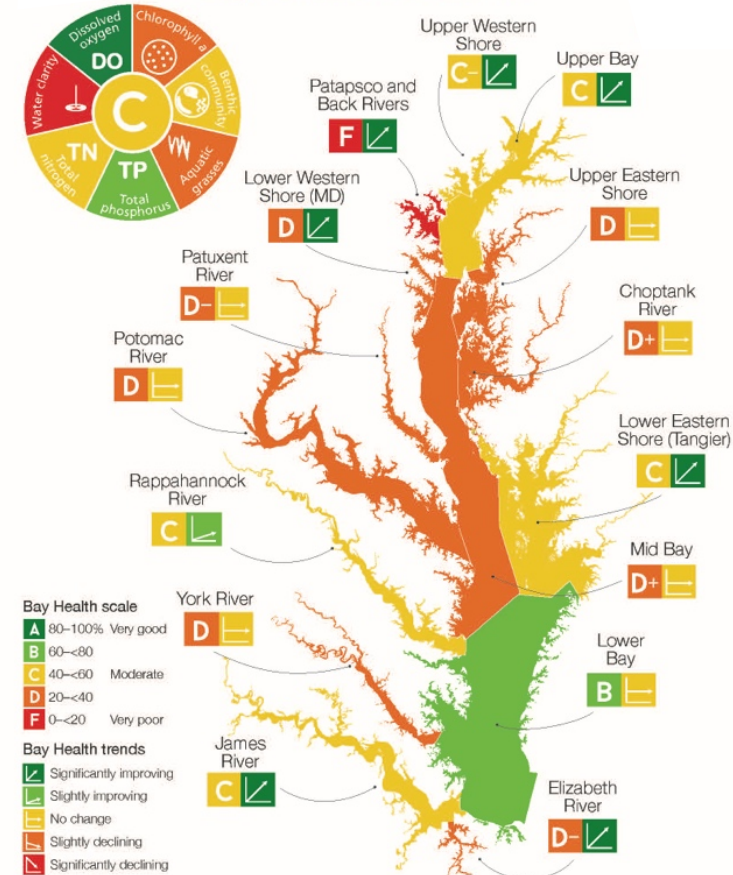
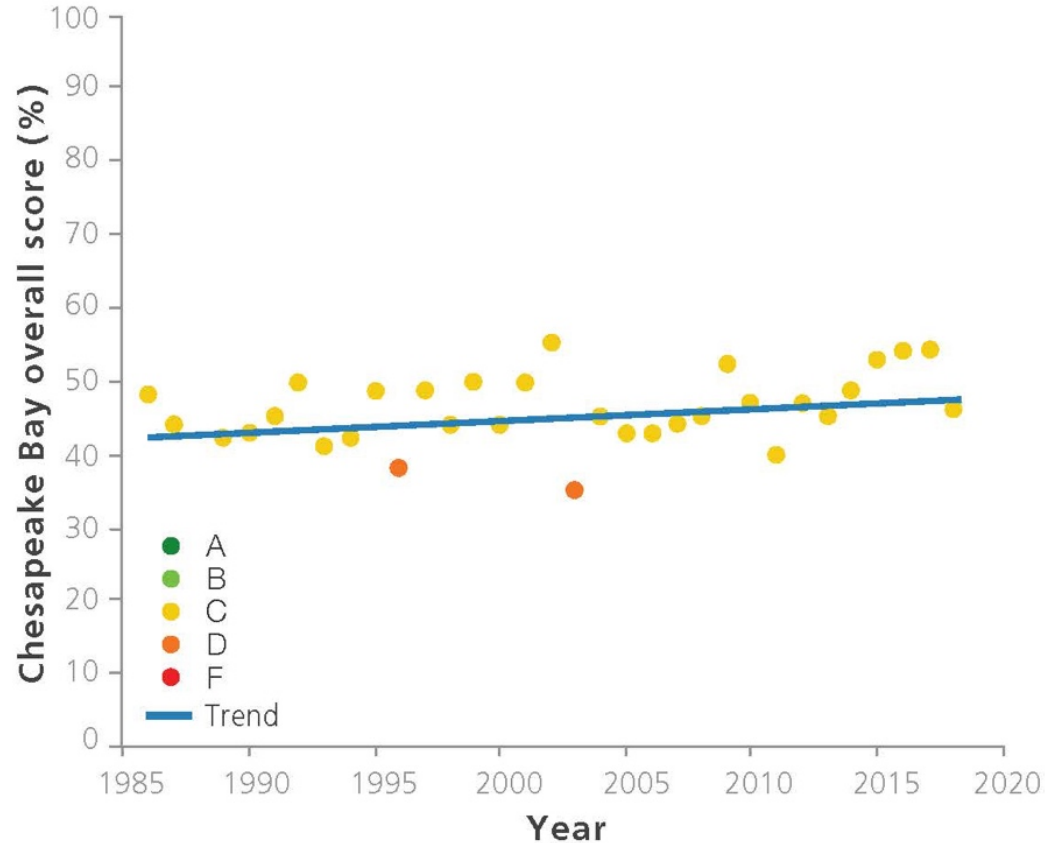


# Ecosystem health report cards



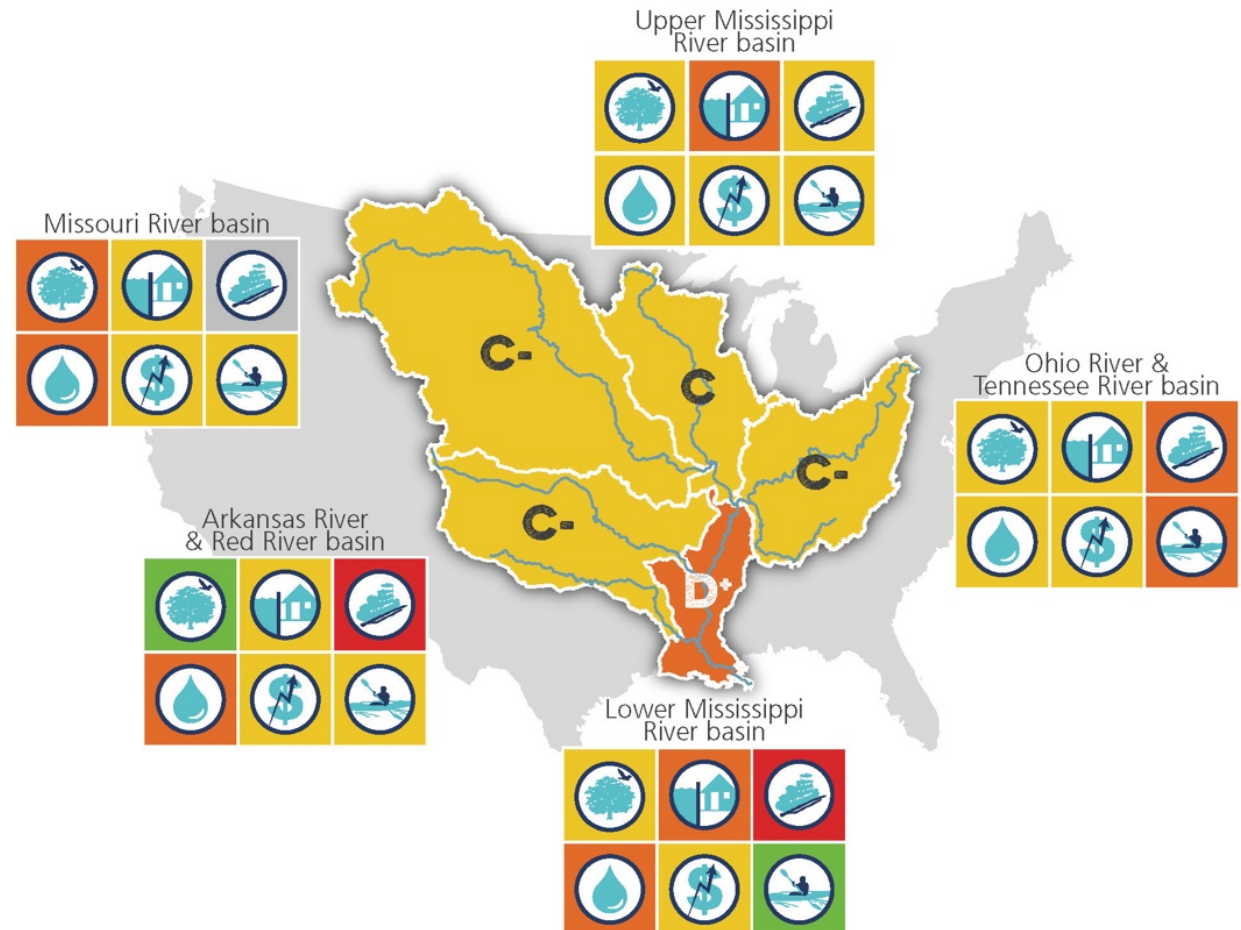
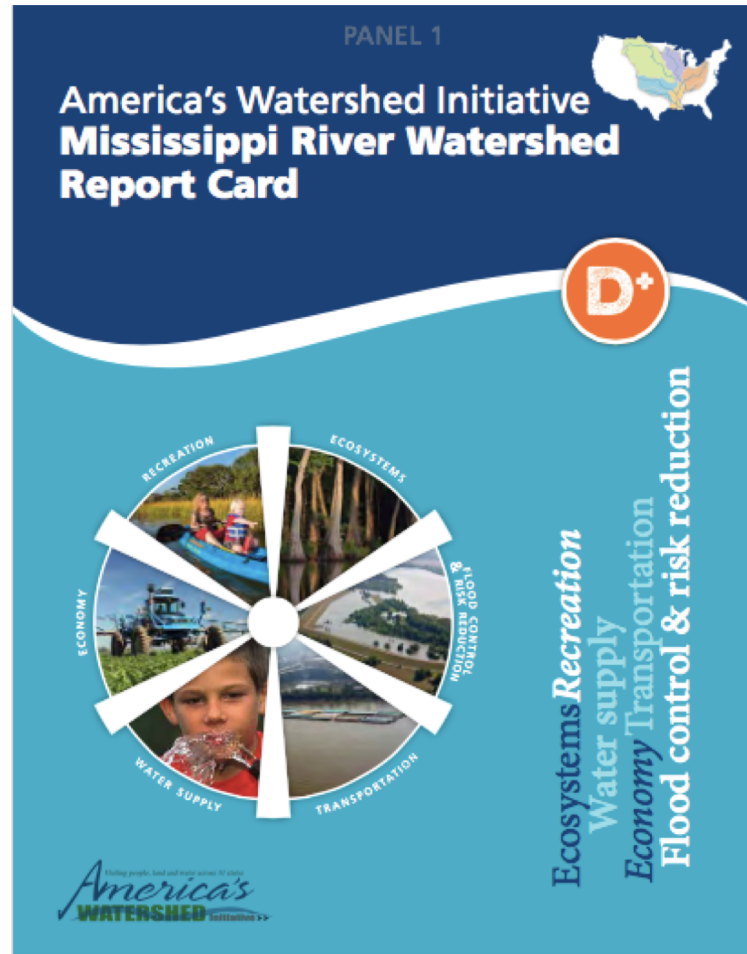
# Useful for tracking health over time

Chesapeake Bay health scores increasing over time



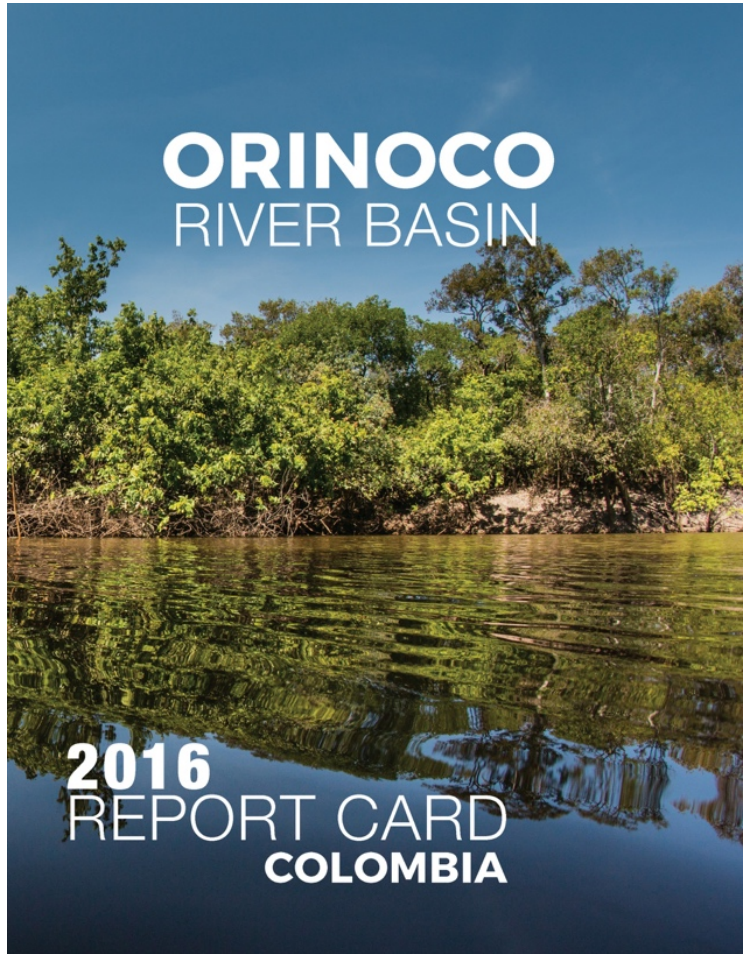


# Have added more societal elements





# Have added more societal elements



# The report card process is 5 steps

## PHASE I: PLANNING

**1** CONCEPTUALIZE

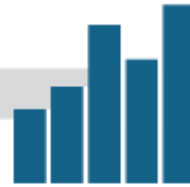


**2** CHOOSE INDICATORS



## PHASE II: THE REPORT CARD PROCESS

**3** DETERMINE THRESHOLDS



**4** CALCULATE GRADES



**5** COMMUNICATE



## PHASE III: RAISE THE GRADE



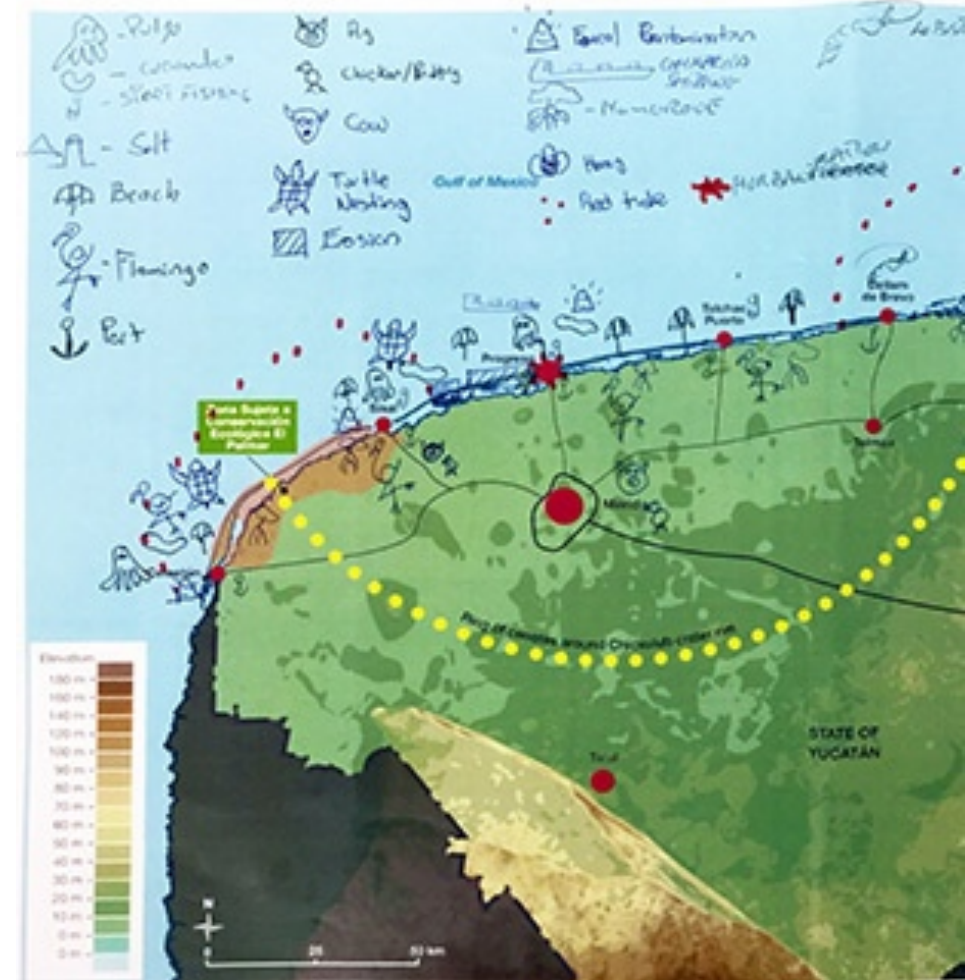


# Engaging stakeholders from concept phase



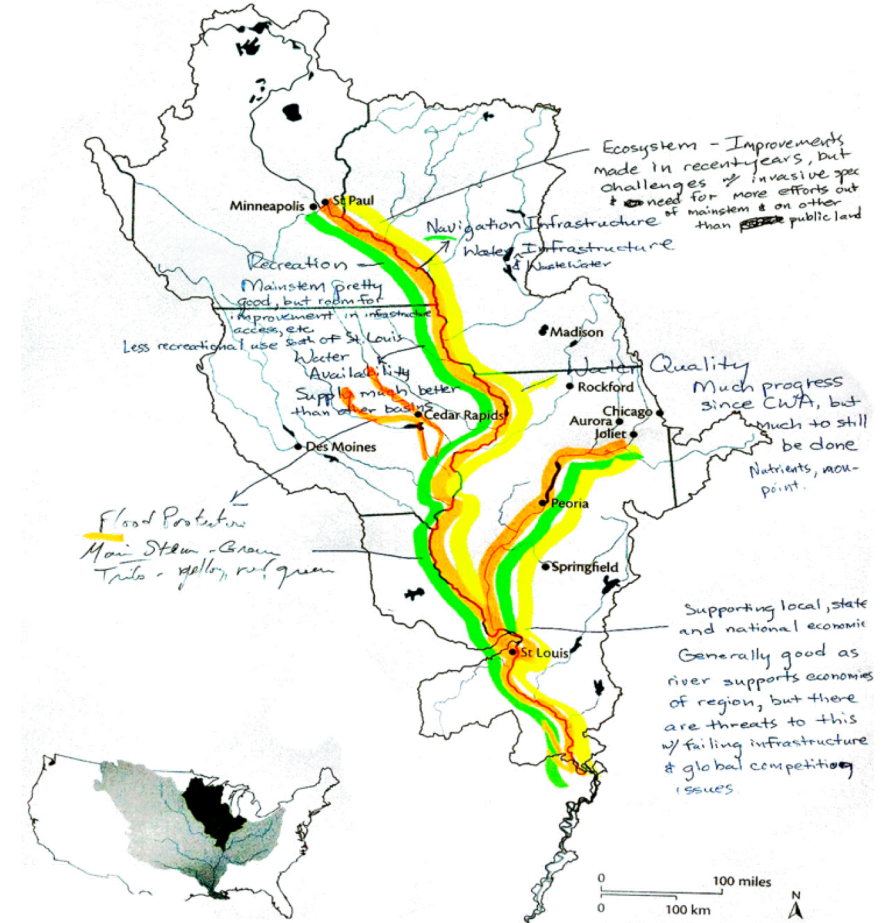


# Facilitating 2-way stakeholder communication





# Creating new collaborative opportunities



● Existing Report Cards ● Report Cards under-development

Mississippi River  
USA



Chesapeake Bay  
USA



Long Island Sound  
USA



Chilika Lake  
India



Upolu  
Samoa



Willamette River  
Oregon USA



Gulf of Mexico  
USA



Orinoco River  
Colombia



Kura River Basin  
Armenia, Georgia  
Azerbaijan



Great Barrier Reef  
Australia





# Current projects

- Darwin Harbour, Australia
- Kwando River Report Card
- NSF Belmont Project (US, Japan, Philippines, India)
- NOAA Coral Reefs in the Pacific, Atlantic, and Caribbean
- Gulf of Mexico Coral Reefs (Mexico, Cuba, US)
- Upper Rio Grande
- Western Lake Erie Report Card
- Verde River Report Card (released this week!)
- Mississippi River 2020
- Chesapeake Bay Report Card expansion
- MDNR Coastal Adaptation
- Chesapeake Monitoring Cooperative
- NIEHS Oceans and Human Health Center of Excellence