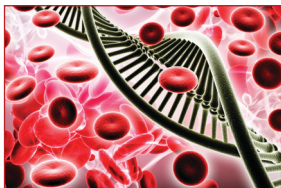




# The Blood Vessel Study

## Goal

The Blood Vessel Study will help scientists understand how genes affect the inner lining of blood vessels and their role in heart and cardiovascular disease.



## What's required?

- One visit to the Clinical Research Unit at the National Institute of Environmental Health Sciences (NIEHS) in Research Triangle Park, North Carolina
- Physical exam, electrocardiogram (ECG) to measure heart rhythm, collection of biological samples, and tests to study how your blood vessels widen

Participants will receive up to \$500 for completing all study procedures, and will be compensated for their time and travel costs.

## Who can participate?

- Participants in the Environmental Polymorphisms Registry (EPR) who meet the genetic requirements

**For more information, or to find out if you are eligible to participate, call 919-541-4973.**

## Lead Researcher

Darryl Zeldin, M.D.  
National Institute of Environmental Health Sciences  
Research Triangle Park, North Carolina