



Disasters in the Western Region and Impacts on EJ Communities

Kevin Riley, PhD MPH
Director, Western Region Universities Consortium
UCLA Labor Occupational Safety and Health Program

April 7, 2021

Western Region Universities Consortium (WRUC)



UCLA Labor Occupational Safety and
Health Program (LOSH)

UC Berkeley Labor Occupational Health
Program (LOHP)

Arizona State University

University of Washington





WESTERN
REGION
UNIVERSITIES
CONSORTIUM



Disasters in the Western Region





Have you been impacted by wildfires in the last several years?

¿Ha sido afectado/a por incendios forestales en los últimos años?

Top 10 Largest California Wildfires

Name	Start Date	Counties	Acres
1. August Complex	August 2020	Glenn, Lake, Mendocino, Tehama, Trinity	1,032,649
2. Mendocino Complex	July 2018	Mendocino, Lake, Colusa, Glenn	459,123
3. SCU Lightning Complex	August 2020	Santa Clara, Alameda, Contra Costa, San Joaquin, Merced, Stanislaus	396,624
4. Creek	September 2020	Fresno, Madera	379,895
5. LNU Lightning Complex	August 2020	Colusa, Lake, Napa, Sonoma, Solano, Yolo	363,220
6. North Complex	August 2020	Plumas, Butte	318,935
7. Thomas	December 2017	Ventura, Santa Barbara	281,893
8. Cedar	October 2003	San Diego	273,246
9. Rush	August 2012	Lassen	271,911
10. Rim	August 2013	Tuolumne	257,314

Source: California Department of Forestry and Fire Protection (Cal Fire) https://www.fire.ca.gov/media/4jandlhh/top20_acres.pdf

2020 West Coast Wildfires



Megafire or gigafire? California's million-acre August Complex fire is so overwhelming, experts disagree on what to call it

Published: Oct. 7, 2020 at 12:00 p.m. ET

By [Nicole Lyn Pesce](#)

5 of the largest wildfires in California history have burned this year alone



2020 West Coast Wildfires



Camp Fire, November 2018



Butte County

Burned 153,336 acres

Destroyed 18,805 structures

85 fatalities

Destroyed most of Paradise,
CA, and several adjacent
communities



Woolsey Fire, November 2018



Los Angeles and Ventura
Counties

Prompted evacuation of more
than 295,000 people

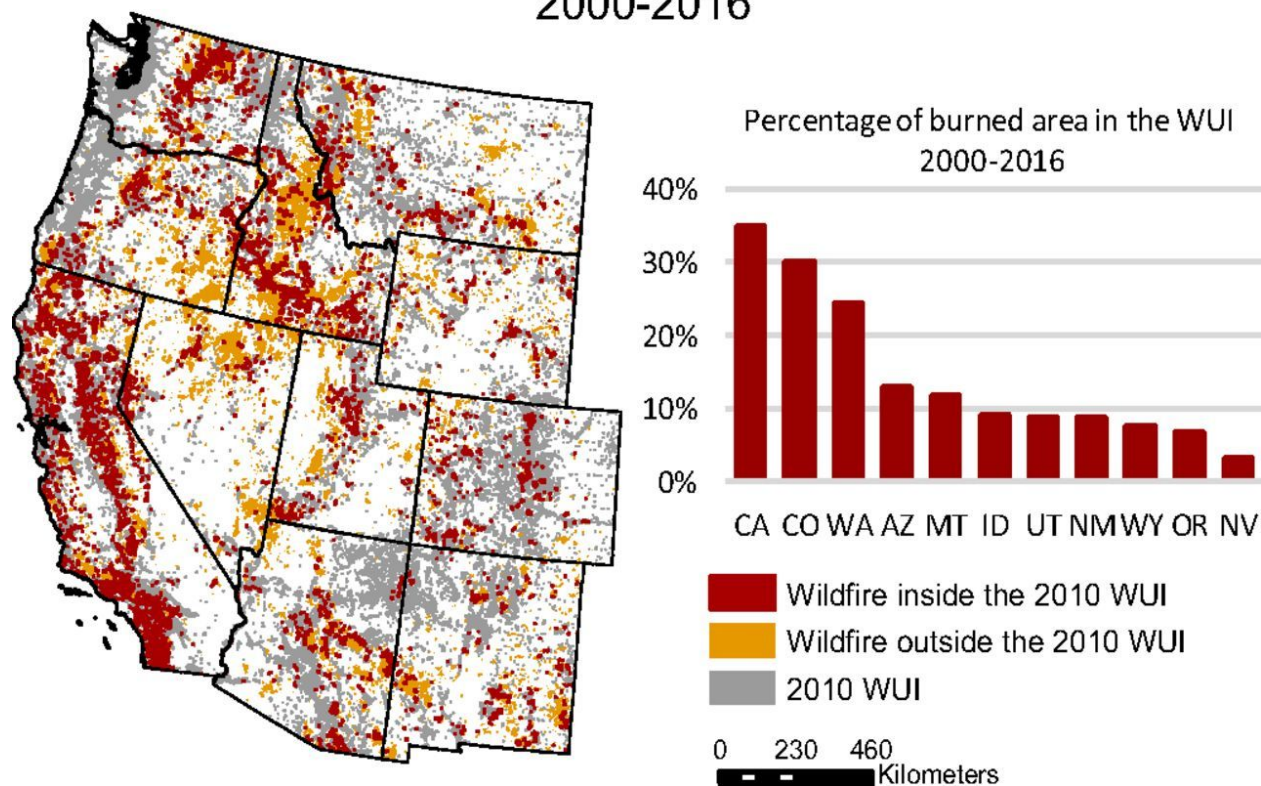
Burned 96,969 acres

Destroyed 1,643 structures

What is contributing to wildfire patterns?



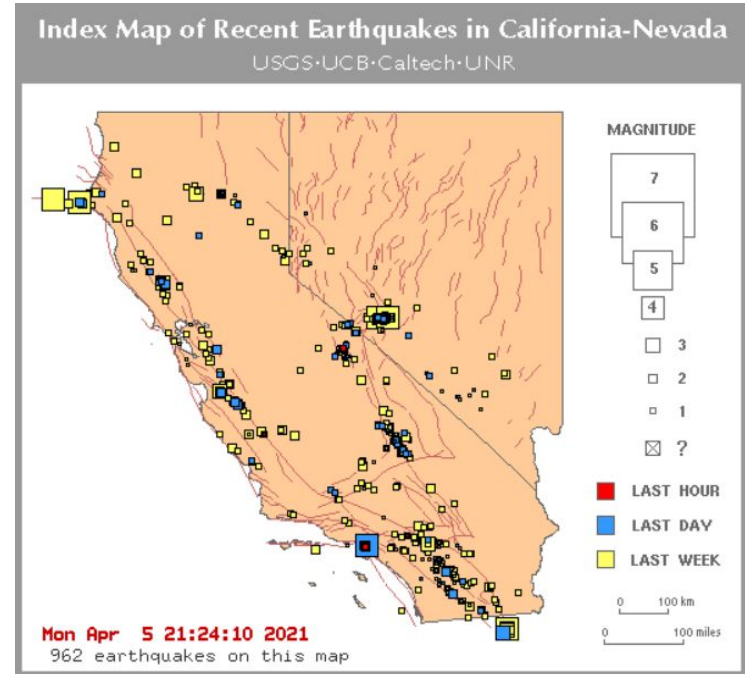
Wildfire and the Wildland-Urban Interface (WUI) 2000-2016



Tania Schoennagel, Jennifer K. Balch, Hannah Brenkert-Smith, et al., Adapt to more wildfire in Western North American forests as climate changes. *Proceedings of the National Academy of Sciences* May 2017, 114 (18) 4582-4590; DOI: 10.1073/pnas.1617464114

Other Disasters in the Western Region

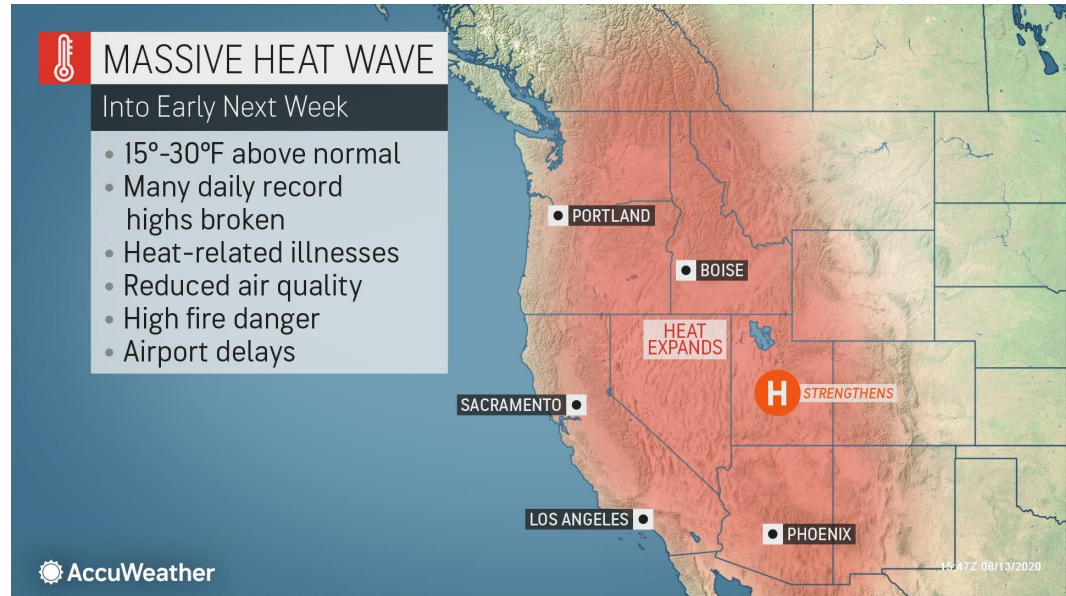
Earthquakes



Other Disasters in the Western Region

Earthquakes

Heatwaves



Other Disasters in the Western Region



Earthquakes

Heatwaves

Industrial Hazmat Disasters



Other Disasters in the Western Region

Earthquakes

Heatwaves

Industrial Hazmat Disasters

COVID-19 Pandemic



Other Disasters in the Western Region

Earthquakes

Heatwaves

Industrial Hazmat Disasters

COVID-19 Pandemic

Combined Disaster Events



Disaster-Vulnerable Communities



What communities do you work with that may be vulnerable during or after a disaster?

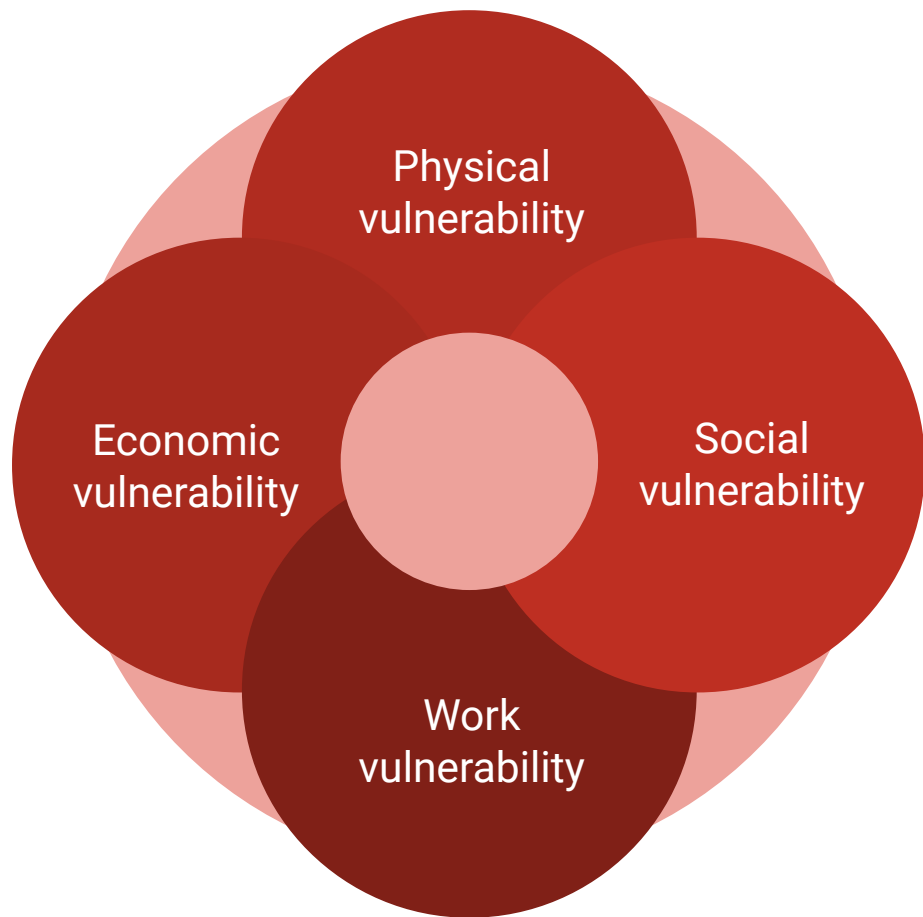
¿Con qué comunidades trabaja que puedan ser vulnerables durante o después de un desastre?

www.menti.com

CODE: 33 40 89 4

EJ communities and disasters





Wildfires: Disaster-exposed residents

Undocumented Immigrants Were Afraid To Use California Wildfire Shelters, So They Slept On Beaches



Wildfires: Essential workers

"Touted as 'Essential'... Treated as Disposable": Labor Day Anger as Migrant Farm Workers Toil Inside Wildfire Evacuation Zones



Cal/OSHA Wildfire Smoke Standard

State of California
Department of Industrial Relations

Home Labor Law Cal/OSHA - Safety & Health Workers' Comp Self Insurance Apprenticeship

[Cal/OSHA](#) | [Advisory Meetings](#) | [Worker Protection from Wildfire Smoke](#)
Emergency Regulation

Emergency Regulation on Protection from Wildfire Smoke



Air Quality Index - Particulate Matter	
301 – 500	Hazardous
201 – 300	Very Unhealthy
151 – 200	Unhealthy
101 – 150	Unhealthy for Sensitive Groups
51 – 100	Moderate
0 – 50	Good

Wildfires: First responders



Los Angeles Times

CALIFORNIA

Getty fire: Housekeepers and gardeners go to work despite the flames



Wildfires: Disaster recovery labor force



Training for Workers and Communities for Disasters

Training Approach



- Hazard awareness training for workers and community members

Training Approach



- Hazard awareness training for workers and community members
- Community capacity building
 - Train-the-Trainer model, worker leaders, community health *promotoras*

Training Approach



- Hazard awareness training for workers and community members
- Community capacity building
 - Train-the-Trainer model, worker leaders, community health *promotoras*
- New models of community-based infrastructure
 - Adaptation of CERT model, disaster response and resiliency hubs







Thank you

Kevin Riley

Western Region Universities Consortium

kriley@irle.ucla.edu
