



# GREEN HEART

LOUISVILLE

Aruni Bhatnagar, PhD, University of Louisville  
Christina Lee Brown Envirome Institute

# CENTRAL HYPOTHESIS

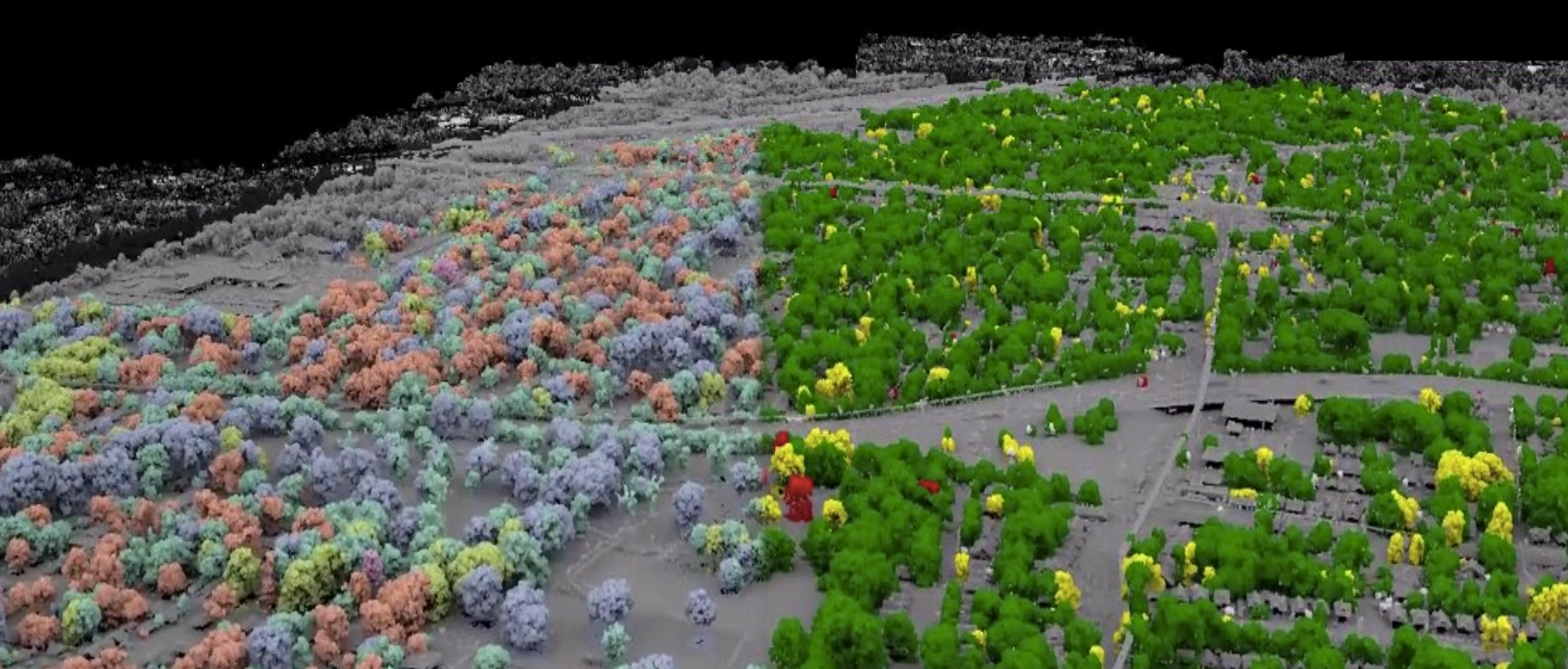
Exposure to neighborhood greenery diminishes the risk of cardiovascular disease by decreasing the levels of air pollution



An aerial photograph of a suburban neighborhood. The image shows a grid of streets with houses, lawns, and trees. The houses are mostly single-story with dark roofs. There are many green trees scattered throughout the neighborhood. A few swimming pools are visible in the backyards. The overall scene is a typical residential area.

# NEIGHBORHOOD GREENING

Community Engagement, Acceptability, Adoption, and Feasibility



Environmental Assessment – Appropriateness and Feasibility



# Environmental Assessment – Appropriateness and Feasibility





# CARDIOVASCULAR HEALTH

Blood Pressure, Lipids, Obesity and Diabetes  
Cardiovascular disease risk, biomarkers of cardiovascular injury

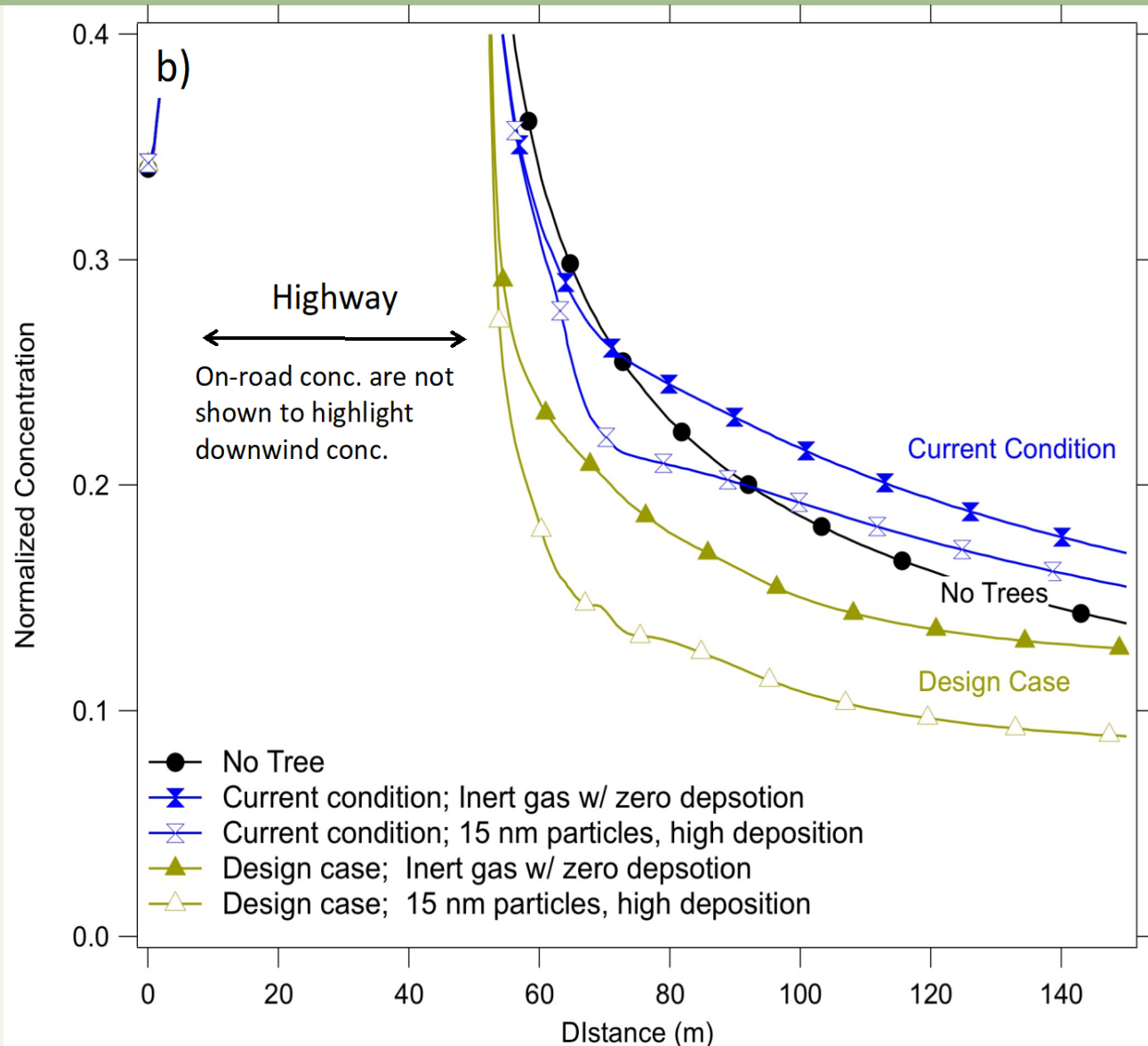
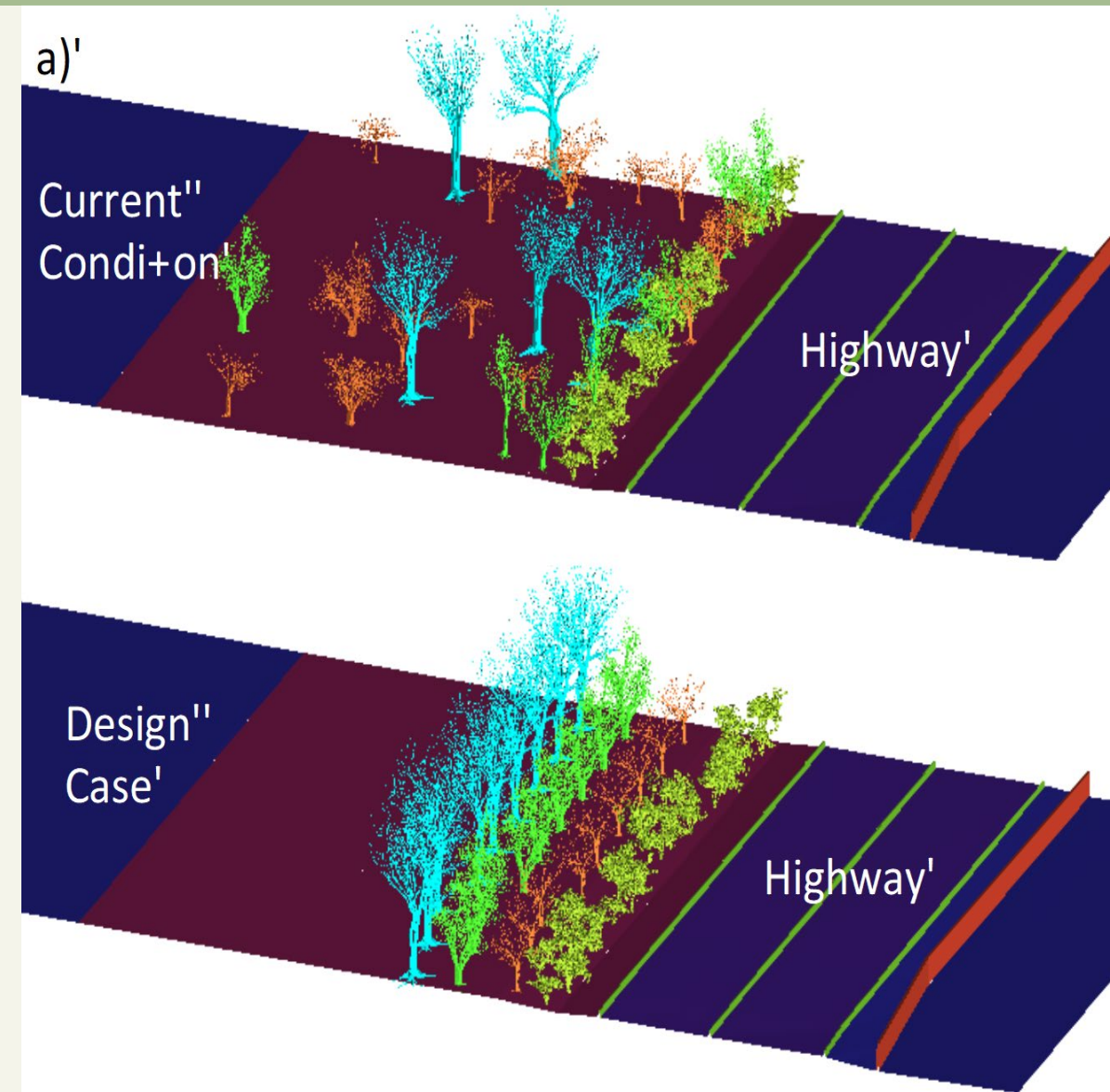
# TRANSPLANT LARGE TREES



**PBS**   
**NEWS  
HOUR**

Costs, Sustainability, Diffusion, and  
Scaling

# DESIGNING BUFFERS



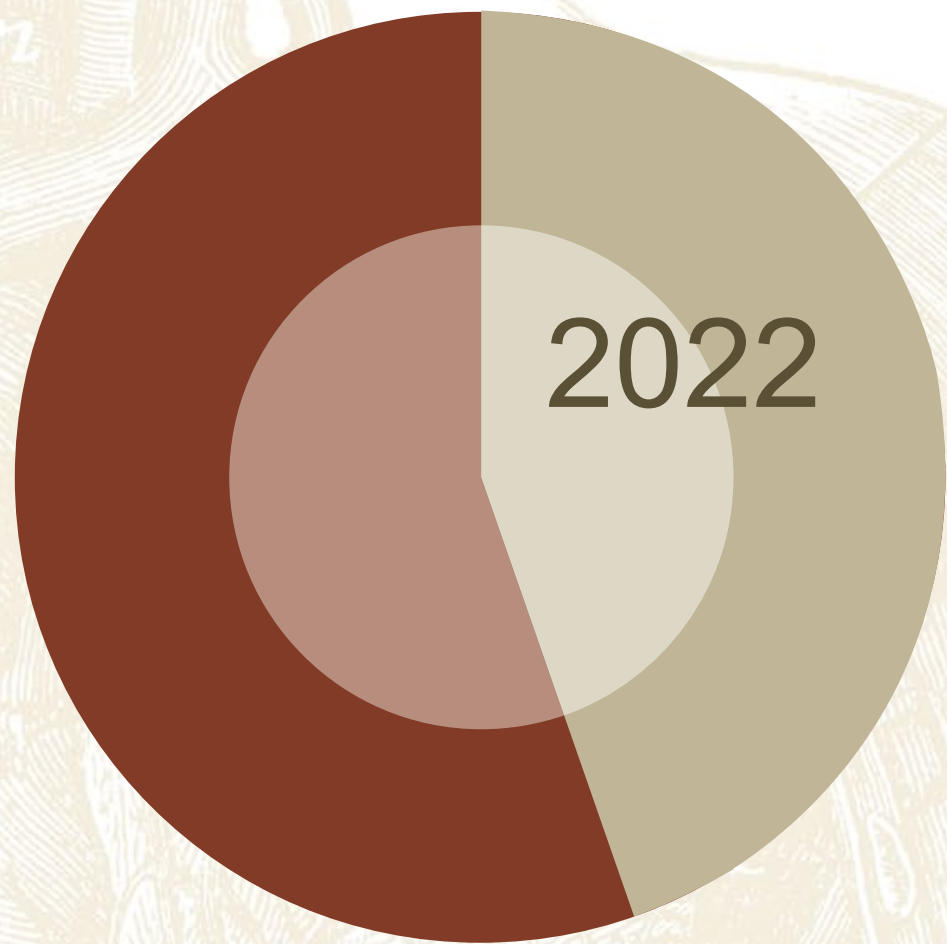




Costs, Sustainability, Diffusion, and Scaling

2018

2021



Reevaluation of physical, mental, social, and environmental health  
Assess change in pollution

# Creating Healthier Cities of Tomorrow

New ways to prevent heart disease

New way to decrease air pollution

Development of new urban policies, guidelines  
building codes

A new model of healthy urban living that could be  
replicated world wide

