



National Institute of
Environmental Health Sciences



28th

ANNUAL

NIEHS BIOMEDICAL CAREER SYMPOSIUM

Tuesday, April 21, 2026

8:30 a.m. – 5:00 p.m.

On-Site Event: NIEHS Main Campus/Rall Building

NIEHS Building 101, Rodbell Auditorium

111 TW Alexander Drive, Research Triangle Park, NC 27709

Career-Specific Discussions
Career Development Workshops
Networking Opportunities

Wednesday April 22, 2026

10:00 a.m. – noon EDT

Virtual Event

One-on-One CV/Resume Reviews and Consultations

Organized by the NIEHS Trainees' Assembly

Sponsored by the NIEHS Office of Fellows' Career Development

Table of Contents

Welcome Letters	1
Opening and Welcome	5
Keynote: Jason Kralic, Ph.D. – Learning Your Way Forward: A Neuroscience-Inspired Career Journey	6
NIEHS Biomedical Career Symposium Session One	7
Panel Discussion 1: Alternative Career Pathways	7
Workshop 1: The Networking Advantage: Creating Connections That Propel Your Career	9
NIEHS Biomedical Career Symposium Session Two	10
Panel Discussion 2: Academia	10
Workshop 2: Exploring Career Pathways: Finding Your Fit in Biomedical Sciences	12
Workshop 3: Pathway to Medical School, M.D./Ph.D., and Ph.D. Programs: Strategies for a Strong Application	13
NIEHS Biomedical Career Symposium Session Three	14
Workshop 4: Your Digital Footprint: Optimizing Your Online Professional Image	14
Panel Discussion 3: Industry	15
NIEHS Biomedical Career Symposium Session Four	17
Workshop 5: The Job Offer Formula: Turning Interviews Into Job Offers	17
Panel Discussion 4: Inside the Hiring Process	18
Panel Discussion 5: From Postbac to Professional	20
CV/Resume Review	22
Exhibitors	23
NIEHS Office of Fellows' Career Development	28
Acknowledgements	29
NIEHS Biomedical Career Symposium Planning Committee	30
Notes	31



Agenda-at-a-Glance

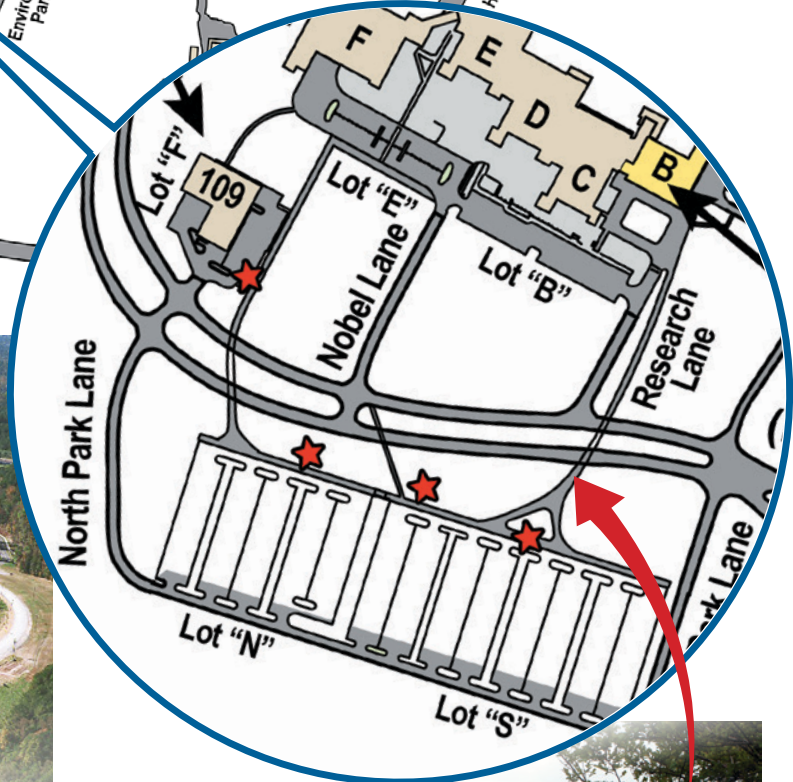
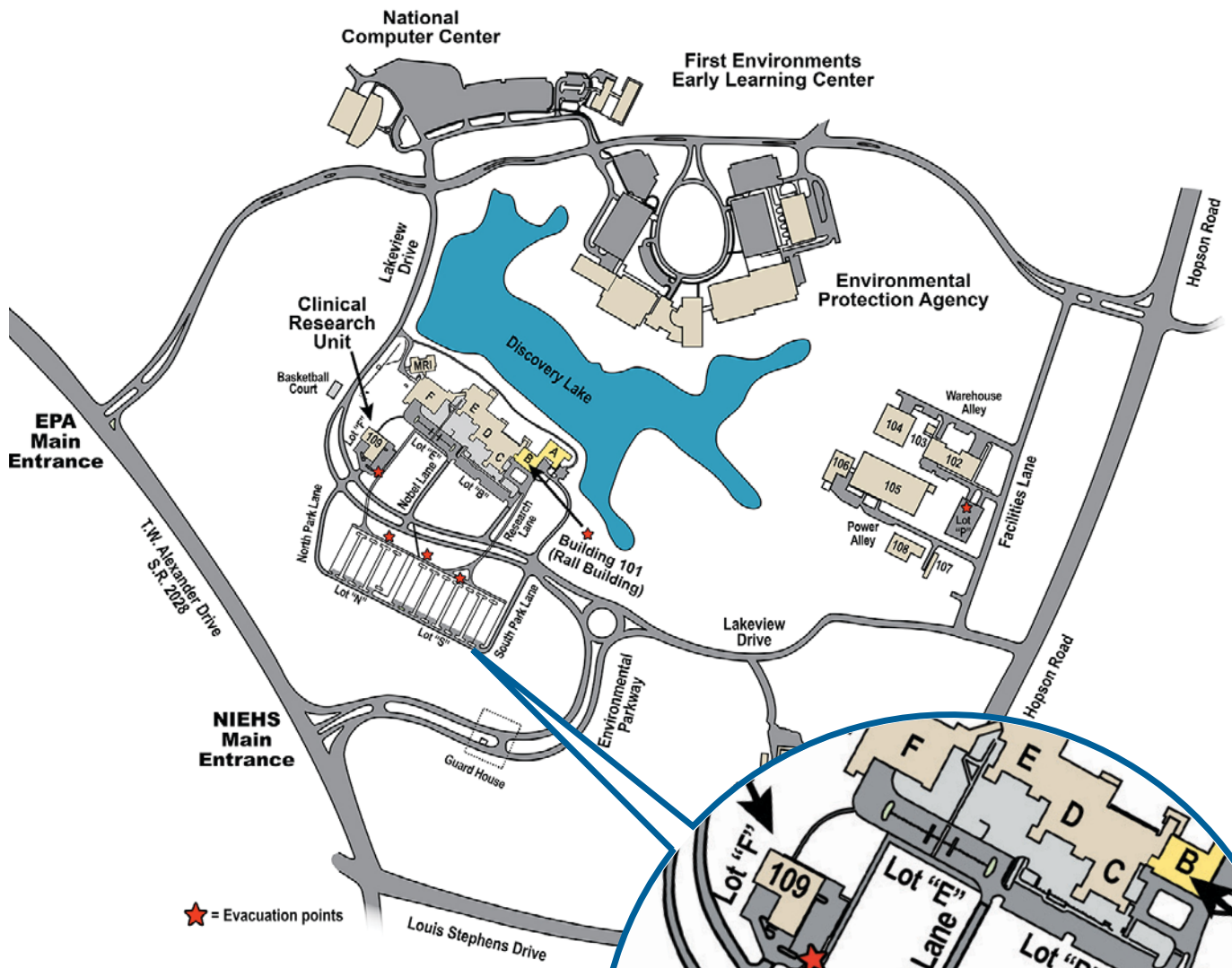
Development Workshops

Career Panels

Network Opportunities

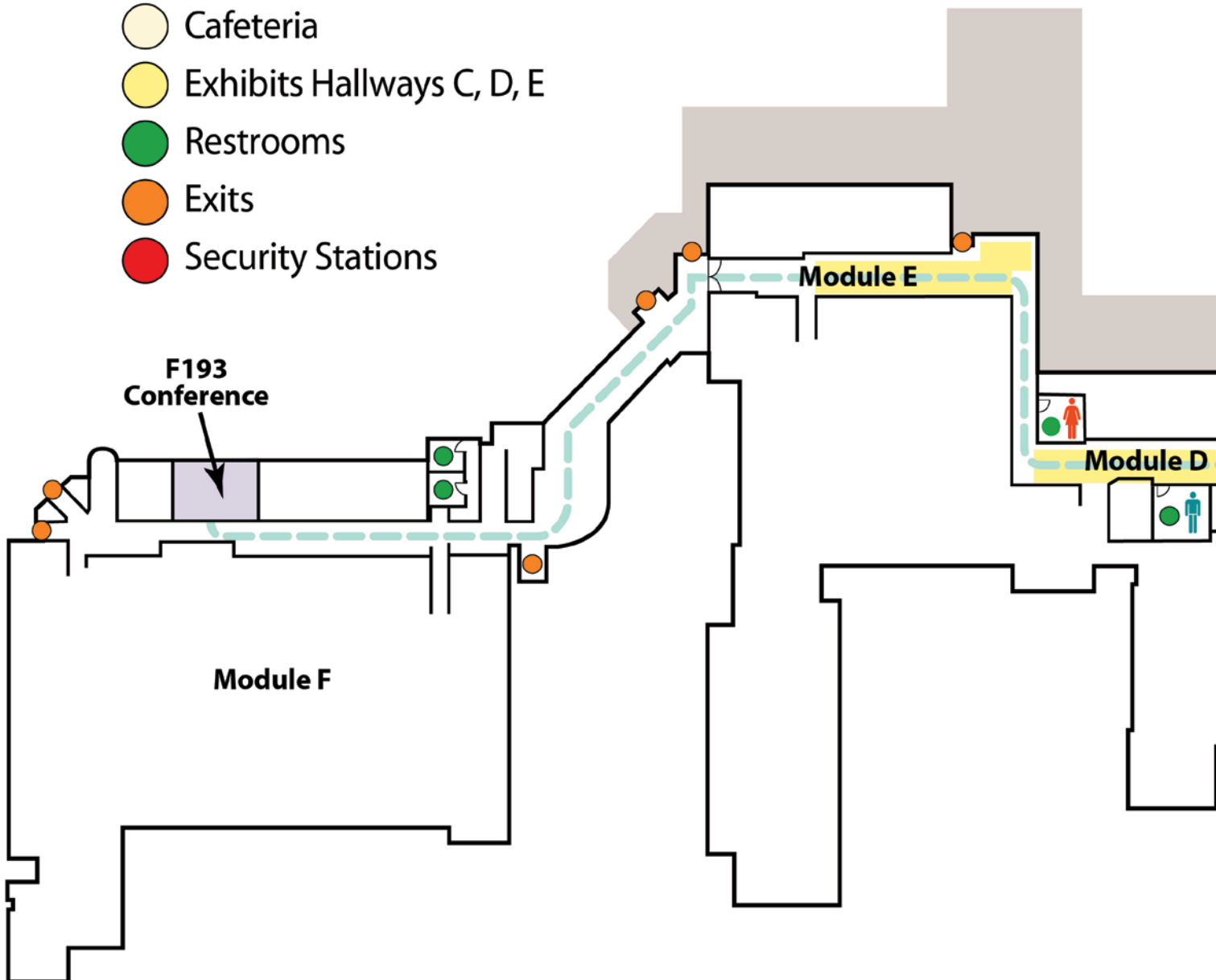
Tuesday April 21, 2026	Rodbell A	Rodbell B	Rodbell C	F193
8:00 – 8:30 a.m.	Check-In			
8:30 – 9:00 a.m.	Welcome and Opening Remarks			
Keynote Address 9:00 – 10:00 a.m.	Keynote Speaker: Jason Kralic, Ph.D. Learning Your Way Forward: A Neuroscience-Inspired Career Journey			
10:00 – 10:30 a.m.	Break and Company Exhibits (Module D and E Hallways)			
Session One 10:30 – 11:30 a.m.	Panel Discussion 1: Alternative Career Pathways	Workshop 1: The Networking Advantage: Creating Connections That Propel Your Career Dara Wilson-Grant, M.S.Ed.		
11:30 a.m. – 12:40 p.m.	Networking Lunch (Cafeteria) and Company Exhibits (Module D and E Hallways)			
Session Two 12:40 – 1:40 p.m.	Panel Discussion 2: Academia	Workshop 2: Exploring Career Pathways: Finding Your Fit in Biomedical Sciences Rebekah Layton, Ph.D., CMC, PCC	Workshop 3: Pathways to Medical School, M.D./Ph.D., and Ph.D. Programs: Strategies for a Strong Application Andrea Liu	
1:40 – 2:00 p.m.	Break and Company Exhibits (Module D and E Hallways)			
Session Three 2:00 – 3:00 p.m.	Workshop 4: Your Digital Footprint: Optimizing Your Online Professional Image Gail McCowan, MBA, CCSP	Panel Discussion 3: Industry		
3:00 – 3:20 p.m.	Break and Company Exhibits (Module D and E Hallways)			
Session Four 3:20 – 4:20 p.m.	Workshop 5: The Job Offer Formula: Turning Interviews Into Job Offers Laura Marler, Ph.D.	Panel Discussion 4: Inside the Hiring Process		Panel Discussion 5: From Postbac to Professional
Wednesday April 22, 2026	Virtual			
10:00 a.m. – noon	One-on-One CV/Resume Reviews and Consultations			

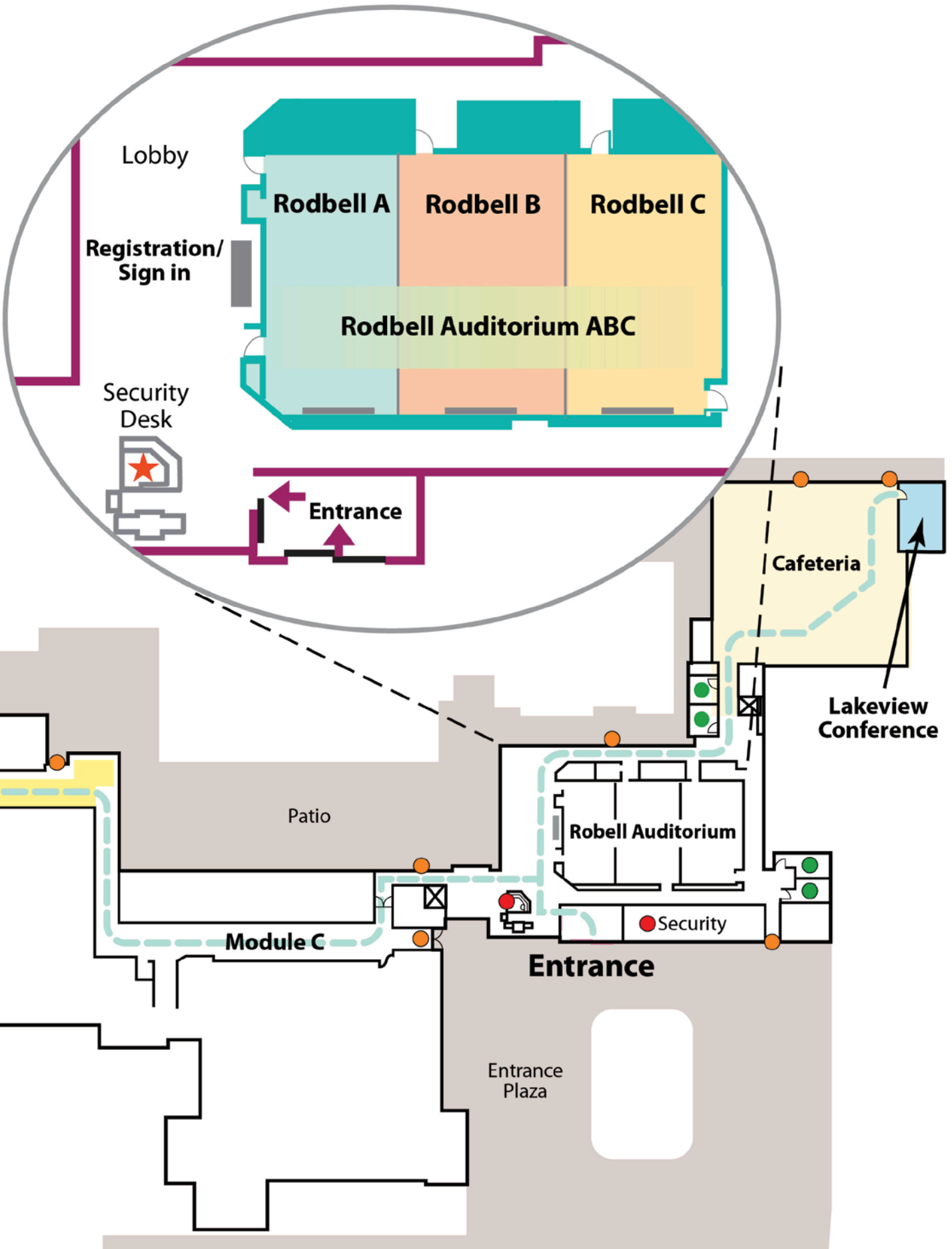
Campus Parking



NIEHS Building 101 Floorplan

- Rodbell Auditorium
- Rodbell A Conference Space
- Rodbell B Conference Space
- Rodbell C Conference Space
- Lakeview Conference Space
- F193 Conference Space
- Cafeteria
- Exhibits Hallways C, D, E
- Restrooms
- Exits
- Security Stations







National Institutes of Health
National Institute of
Environmental Health Sciences
P. O. Box 12233
Research Triangle Park, NC 27709
Website: <https://www.niehs.nih.gov>

April 21, 2026

Dear Career Symposium Participants:

On behalf of the National Institute of Environmental Health Sciences (NIEHS), it is my pleasure to welcome you to the 28th Annual NIEHS Biomedical Career Symposium. This long-standing and highly anticipated event reflects our continued commitment to supporting the professional development of our trainees.

Organized by the NIEHS Trainees' Assembly in collaboration with the NIEHS Office of Fellows' Career Development, the symposium is designed to provide valuable insights, practical guidance, and meaningful networking opportunities. I extend my sincere appreciation to the co-chairs, Drs. Osafu Egbon and Shruti Somai-Hyatt, volunteer trainees, the Office of Fellows' Career Development, and the many individuals who have dedicated their hard work, time, and effort to making this year's symposium a success — especially as we proudly host it here at NIEHS!

We are honored to welcome Dr. Jason Kralic, a former NIEHS summer student, as this year's keynote speaker. In addition, the symposium features five professional development workshops, five career panels, CV/resume reviews, and an interactive exhibitor area. Together, these offerings are intended to help you explore a wide range of career paths and build connections that will support continued professional growth.

I encourage you to take full advantage of all this symposium has to offer and to continue pursuing your professional goals with determination and enthusiasm. I wish you every success in your future endeavors.

All the best,

A handwritten signature in cursive script that reads "Kyle Walsh".

Kyle Walsh, Ph.D.
Director, National Institute of Environmental Health Sciences
Director, National Toxicology Program



National Institutes of Health
National Institute of
Environmental Health Sciences
P. O. Box 12233
Research Triangle Park, NC 27709
Website: <https://www.niehs.nih.gov>

April 21, 2026

Dear Career Symposium Participants:

Welcome to the 28th Annual NIEHS Biomedical Career Symposium. On behalf of the NIEHS Division of Intramural Research, we are honored to host you for one of North Carolina's premier gatherings of biomedical organizations and early-career scientists.

We are delighted to hold the career symposium on-site at NIEHS for a second year. Today's in-person program features workshops on leadership, networking, and negotiation skills, along with panel discussions covering career paths in academia, industry, and alternative careers in biomedical sciences. The career symposium will also feature a panel discussion with hiring managers emphasizing hiring strategies and a panel discussion geared toward preparing postbaccalaureate fellows for the next career phase. On day two, participants are invited to join virtual one-on-one CV and resume review sessions. We are also pleased to welcome Dr. Jason Kralic as our keynote speaker; Jason is an NIEHS alumnus who began his research journey as an NIEHS summer student.

The career symposium is designed to foster exploration, skill-building, and meaningful connections. I encourage you to engage fully with fellow attendees, panelists, speakers, and exhibitors. A strong professional network is an invaluable asset in the biomedical sciences and can lead to exciting opportunities.

This event is entirely trainee-led, organized by NIEHS postdoctoral, predoctoral, and postbaccalaureate fellows. We extend our sincere appreciation to the career symposium co-chairs, Drs. Osafu Egbon and Shruti Somai-Hyatt, the committee members, volunteers, and the many NIEHS staff who contributed to the success of this event, including colleagues in the Office of Fellows' Career Development and the Office of Communications and Public Liaison.

Thank you for joining us. I hope you enjoy the symposium and find inspiration and guidance for the next steps in your career journey.

Sincerely,

A handwritten signature in black ink that reads "Darryl C. Zeldin M.D." with a stylized flourish at the end.

Darryl C. Zeldin, M.D.
Scientific Director



National Institutes of Health
National Institute of
Environmental Health Sciences
P. O. Box 12233
Research Triangle Park, NC 27709
Website: <https://www.niehs.nih.gov>

April 21, 2026

Dear Career Symposium Participants:

On behalf of the NIEHS Office of Fellows' Career Development (OFCD), I am delighted to welcome you to the 28th Annual NIEHS Biomedical Career Symposium. We are pleased to host you at NIEHS and to continue our tradition of providing postdoctoral fellows, graduate students, and postbaccalaureate fellows with opportunities to explore a wide range of biomedical career pathways. Today marks an important step in building new connections and expanding your professional network.

This annual event would not be possible without the direction, commitment, and leadership of over 25 fellows from the NIEHS! Each participant today is a beneficiary of a collective effort that spanned the planning and organization of this entire event. We are very grateful and would like to acknowledge the dedication, tireless efforts, and collaborative spirit that was on full display by the NIEHS fellows leading up to this symposium. I would like to acknowledge the 2026 co-chairs of the organizing committee, Osafu Egbon and Shruti Somai-Hyatt, for their leadership and guidance, and for continuing the rich tradition of the NIEHS Biomedical Career Symposium! I would also like to extend my gratitude to committee chairs: Arts and Photography Booklet: Kimberly Abt; Career Panel: Chioma Aloh; CV/Resume Review: Vaishnavi Venka; and Exhibitor Committee: Anastasia Robinson. We appreciate all the committee members and day-of volunteers for their diligent efforts in organizing this event! I also would like to thank the OFCD team, Hong Xu, Katherine Hamilton, and Edith Lee, for their support and resilience. A big thank you to the Office of Communications and Public Liaison for their contributions to the symposium.

We are very lucky that this venue provides participants with opportunities to connect with others. Come ready to participate in workshops to learn about digital branding, job offer strategies, career navigation, strategic networking, negotiation skills, and more. Come ready to ask questions during career panel discussions about academia, industry, and alternative career pathways. Come ready to build your network and create connections with biomedical professionals and colleagues. We are excited that many of you signed up to join us on April 22 for a CV/resume review with personalized, one-on-one virtual advice.

To each of you participating, I wish you continued success and look forward to the meaningful contributions you will make in your careers and beyond.

Sincerely,

Mercedes Arana, Ph.D.
Director, Office of Fellows' Career Development
National Institute of Environmental Health Sciences



National Institutes of Health
National Institute of
Environmental Health Sciences
P. O. Box 12233
Research Triangle Park, NC 27709
Website: <https://www.niehs.nih.gov>

April 21, 2026

Dear Career Symposium Participants:

On behalf of the Organizing Committee, we are excited to welcome you to the 28th Annual NIEHS Biomedical Career Symposium. We are glad to have you here for an event designed to support thoughtful career planning and practical skill development as you plan the next steps in your career.

This symposium is organized by NIEHS postdoctoral, predoctoral, and postbaccalaureate fellows, with support from the Office of Fellows' Career Development and many collaborators. Over the past years, this event has become a highly valued resource for early-career scientists across the Research Triangle area, offering exposure to a wide range of career paths, direct engagement with experienced professionals, and opportunities to build meaningful connections.

Over the next two days of this event, you will have the opportunity to participate in interactive workshops focused on exploring different career pathways in biomedical sciences, mastering networking skills, interview strategies, and how to maintain a professional image online. You will also hear from professionals representing academia, industry, and data science, including topics about networking and hiring. In addition, you will have the chance to connect with potential employers at the exhibitions, as well as one-on-one virtual CV/resume consultations. This event also includes a keynote address by Dr. Jason Kralic, who started his career at NIEHS as a summer student. Dr. Kralic will share his journey and the experiences that shaped his career in the keynote address titled, "Learning Your Way Forward: A Neuroscience-Inspired Career Journey."

This career symposium would not be possible without the time and dedication of many contributors. First, we would like to express our sincere gratitude to all the volunteers, especially our subcommittee chairs, Drs. Chioma Aloh, Vaishnavi Venkat, Anastasia Robinson, and Kimberly Abt, for their diligence and exceptional efforts. We would also like to thank Dr. Mercedes Arana, Hong Xu, Katherine Hamilton, Edith Lee, Dr. Zeldin, Paul Cacioppo, and OCPL for their invaluable support. We are extremely grateful to our speakers, panelists, exhibitors, and CV/resume reviewers. Most importantly, we thank you for taking the time to participate in this amazing event. We hope this symposium provides you with clarity, practical insight, and meaningful connections that support your professional goals.

We look forward to an insightful and productive career symposium!

Warm regards,

Shruti Somai-Hyatt, Ph.D., and Osafu Egbon, Ph.D.
Co-Chairs, 28th Annual NIEHS Biomedical Career Symposium

Tuesday, April 21, 2026

Welcome Address
Rodbell Auditorium | 8:30 – 9:00 a.m.

Kyle Walsh, Ph.D., Director, National Institute of Environmental Health Sciences and National Toxicology Program

Darryl Zeldin, M.D., Scientific Director, Intramural Research Division,
National Institute of Environmental Health Sciences

Mercedes Arana, Ph.D., Director, Office of Fellows' Career Development,
National Institute of Environmental Health Sciences

Osafu Egbon, Ph.D., and **Shruti Somai-Hyatt, Ph.D.**, Co-Chairs, NIEHS Biomedical Career Symposium

KEYNOTE ADDRESS
Rodbell Auditorium | 9:00 – 10:00 a.m.

**Learning Your Way Forward:
A Neuroscience-Inspired Career Journey**

Jason Kralic, Ph.D.
CEO and Co-Founder, Tellus Therapeutics Inc.





NIEHS BIOMEDICAL CAREER SYMPOSIUM

KEYNOTE ADDRESS

Rodbell Auditorium | 9:00 – 10:00 a.m.

Learning Your Way Forward: A Neuroscience-Inspired Career Journey

Jason Kralic, Ph.D.

Biotech Entrepreneur and CEO

Neuropharmacologist and Co-Founder, Tellus Therapeutics Inc.

Email: jasonkralic@tellustherapeutics.com



Keynote Abstract:

Scientific careers are often framed as linear trajectories defined by early decisions and long-term plans, yet neuroscience offers a far more empowering model for how complex systems — and people — develop. This keynote, “Learning Your Way Forward: A Neuroscience-Inspired Career Journey,” draws on core principles of brain development and learning, including plasticity, sensitive periods, myelination, synaptic pruning, prediction error, distributed networks, and metabolic cost, to reframe how early-career scientists can think about their professional paths. Rather than emphasizing conformity to historical norms of success, this talk argues that careers, like brains, develop through experience, feedback, repetition, and adaptation over time — and that difference, exploration, and risk-taking are often sources of strength rather than liability. Through examples from his own non-linear journey across academic research, translational science, entrepreneurship, and leadership in early-stage biotechnology, the keynote highlights how skills and judgment are built through use, how clarity often emerges through experimentation, and how moments of uncertainty or divergence can accelerate growth rather than signal failure. The goal of this lecture is to empower early-career scientists to focus less on perceived obstacles or deviations from expectation and more on what drives their curiosity, sustains their motivation, and gives their work meaning — recognizing that fulfilling and impactful careers are learned forward and not planned in advance.

Speaker Bio:

Jason Kralic, Ph.D., is a neuropharmacologist and business development (BD) professional with extensive experience in technology innovation, R&D, licensing, and company creation. He co-founded Tellus Therapeutics alongside Duke neonatologist and stem cell biologist Eric Benner, M.D., Ph.D., focusing on developing treatments for neonatal brain injury.

In 2015, Kralic founded Innervate BD Solutions, an advisory firm dedicated to helping clients maximize the potential of their science and business through strategic planning and execution. His career in R&D business development spans roles across small and large pharmaceutical companies, where he has led BD strategy, managed due diligence, licensing and M&A activities, and fostered key alliances.

Kralic earned his Ph.D. in pharmacology from the University of North Carolina at Chapel Hill and completed postdoctoral training at the University of Zurich. A passionate advocate for STEM education, entrepreneurship, and the growth of the life sciences industry in North Carolina, he continues to drive innovation at the intersection of science and business.

Break | 10:00 – 10:30 a.m.

Networking With Exhibitors (Module D and E Hallways)

Session One

PANEL DISCUSSION 1: Rodbell A | 10:30 – 11:30 a.m.

Alternative Career Pathways

Paige Cooper Byas, Ph.D. (Burroughs Wellcome Fund)

Katie Glenn, Ph.D. (Syner-G Biopharma Group)

Dale Karlson, Ph.D. (Terrana Biosciences)

Laura Marler, Ph.D. (NIH Office of Intramural Training and Education)

Brett Phillips, M.A., PMP, CCRP (University of North Carolina at Chapel Hill)

This career panel highlights the many professional paths in biomedical science that extend beyond the bench. Panelists working in roles such as data sciences, nonprofit organizations, medical writing, and related fields will share how they transitioned into these positions and how their scientific training supports their current line of work. Attendees will learn what these careers look like in practice, what skills matter most, and how these roles contribute to progress in biomedical research. This session is ideal for anyone curious about broader career options and will include time for questions and conversation with professionals who have taken less conventional routes.

Panelists:



Paige Cooper Byas, Ph.D., currently works as a program officer at Burroughs Wellcome Fund (BWF). Her portfolio is focused on biomedical and reproductive Sciences, as well as managing the individual career and institutional awards that support physician scientist development. She joined BWF following several years of serving as the director of the BioCoRE (Biosciences Collaborative for Research Engagement) Program at Duke University. In this role, she was responsible for designing innovative and practical programming for both the academic and professional development needs of her Ph.D. and undergraduate scholars. Cooper Byas completed her B.S. in biochemistry as a MARC scholar at Spelman College. She then went on to complete a Ph.D. in molecular cell biology at Washington University in St. Louis. Her doctoral research focused on determining molecular mechanisms by which genetic mutations in the ATP sensitive potassium (KATP) channel, identified in patients with Cantu Syndrome, altered channel activity. She did postdoctoral research at the University of Colorado Anschutz Medical Campus which focused on placental nutrient transport to the fetus. Prior to joining BioCoRE, Cooper Byas helped lead recruitment and evaluation for the National Research Mentoring Network, a National Institutes of Health (NIH)-funded STEM diversity initiative.



Katie Glenn, Ph.D., is a medical writer consultant 1 at Syner-G. Glenn has been a medical writer at Syner-G since 2022, where she has supported multiple Syner-G clients with their medical writing needs. As a regulatory medical writer, she has served as lead writer on various clinical documents, including early- and late-phase clinical study reports, clinical study protocols, briefing documents, investigator brochures, and clinical summary sections of new drug applications and biologics license applications for global health authorities. Overall,

Glenn has more than seven years of medical writing experience in both regulatory and scientific writing.

Email: kglenn456@gmail.com



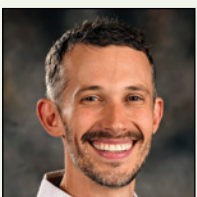
Dale Karlson, Ph.D., is a plant molecular biologist with more than 25 years of experience spanning both academic and industrial research. He is currently a principal scientist and head of trait sciences at Terrana Biosciences, where he focuses on advancing crop trait development using innovative molecular strategies. After earning his Ph.D., Karlson completed postdoctoral training in Japan, investigating molecular mechanisms of plant responses to cold stress.

He later led a federally funded research program as a faculty member prior to moving into the biotech sector, where he held scientific leadership roles at Monsanto, Pairwise, and GreenLight Biosciences. His work has supported the development of high-throughput platforms for trait discovery, gene expression modulation, gene editing, and precision RNA technologies across multiple crop systems. In addition to his industry role, Karlson is an adjunct professor at North Carolina State University, contributing to academic training and research collaboration. He is an inventor on several issued and pending patents, and has authored peer-reviewed publications in plant molecular biology and crop improvement. He can be reached on LinkedIn at <https://www.linkedin.com/in/dale-karlson-1061b735>.



Laura Marler, Ph.D., is the director of the Office of Postdoctoral Services in the NIH Office of Intramural Training and Education (OITE). Marler is passionate about helping biomedical trainees navigate the uncertainty of career decisions while attending to their personal, professional, and scientific development. Marler received a B.S. in chemistry from Furman University and completed her doctoral training in biology at the NIH as a student in the NIH-Johns Hopkins University Graduate Partnerships Program. She joined the OITE in 2019,

where she has enjoyed working with trainees at all levels to develop the career skills and resilience they need to make vital scientific contributions. *Email:* laura.marler@nih.gov



Brett Phillips, M.A., PMP, CCRP, is the clinical research program manager for the UNC Blood Research Center at the University of North Carolina at Chapel Hill. Serving previously for seven years as a clinical research coordinator in oncology and hematology and with expertise in clinical research operations and project management, Phillips oversees the coordination and execution of a portfolio of clinical trials focused on hematologic disorders, ensuring studies progress efficiently from feasibility assessment through completion. In addition to

managing research portfolios, regulatory compliance, and stakeholder engagement, Phillips leads a team of coordinators and student interns, fostering the next generation of clinical research professionals. Passionate about workforce development and research education, Phillips actively engages in initiatives that connect students with hands-on clinical research experiences while driving process improvements to enhance research efficiency and impact. *Email:* brett_phillips@med.unc.edu

WORKSHOP 1: Rodbell B/C | 10:30 – 11:30 a.m.

The Networking Advantage: Creating Connections That Propel Your Career

Dara Wilson-Grant, M.S.Ed.

Director, Postdoctoral Career and Professional Development

Licensed Professional Counselor

Office of Postdoctoral Affairs

University of North Carolina at Chapel Hill

Email: dwgrant@email.unc.edu



Description of Workshop:

Does the thought of networking make you uncomfortable? You're not alone. Networking often gets a bad reputation, but it doesn't have to feel transactional or awkward. In this interactive workshop, you'll learn a proven approach that feels natural and authentic. Discover how to conduct informational interviews that open doors, craft outreach emails that get responses, and nurture your network without feeling pushy. You'll leave with practical strategies and a concrete action plan you can implement immediately.

Speaker Bio:

Dara Wilson-Grant, M.S.Ed., brings 20 years of experience turning uncertainty into confident career direction. As someone who truly "gets it," she specializes in helping postdocs and graduate students navigate the complicated realities of career transitions — whether they're advancing in academia or exploring opportunities elsewhere. Currently serving as the director of Career and Professional Development in the Office of Postdoctoral Affairs at the University of North Carolina at Chapel Hill, Wilson-Grant combines her credentials as a licensed clinical mental health counselor, career coach, and certified salary negotiation specialist with a refreshingly practical approach to professional development. Her workshops do not just inspire — they equip participants with concrete tools, step-by-step frameworks, and actual scripts they can use Monday morning. Through her consulting practice, Careers in Bloom, she has delivered transformative career programming for institutions nationwide, including Duke University, Moffitt Cancer Center, St. Jude Children's Research Hospital, and NIEHS.

Networking Lunch (Cafeteria | 11:30 a.m. – 12:40 p.m.)

Browsing Company Exhibits (Module D and E Hallways)

PANEL DISCUSSION 2: Rodbell A | 12:40 – 1:40 p.m.

Academia

Kenneth Adler, Ph.D. (North Carolina State University)

Rajula Elango Alleva, Ph.D. (National Institute Environmental Health Sciences)

Hugh Crumley, Ph.D. (Duke University)

Ilona Jaspers, Ph.D. (University of North Carolina at Chapel Hill)

Humphrey Hung-Chang Yao, Ph.D. (National Institute Environmental Health Sciences)

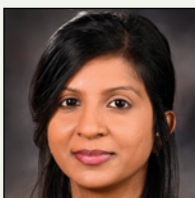
Pursuing an academic career can often feel intimidating, with expectations and processes that are rarely spelled out. This panel will break down the academic job search, including how to find and evaluate faculty positions across institutions and research areas, and how to prepare as a competitive applicant. Panelists will discuss key stages of the hiring process, such as interviews, defining an initial research vision, negotiating startup packages, and securing grants for funding. This panel discussion will also cover mentoring and teaching responsibilities, long-term career planning in research and education, and how to choose research projects that can sustain a productive laboratory over time. This session is designed to provide practical insight into what an academic career really involves and how to navigate it with intention.

Panelists:



Kenneth Adler, Ph.D.'s, research focuses on lung diseases, including chronic bronchitis, ARDS, and lung cancer, and the role of MARCKS (myristoylated alanine-rich C kinase substrate) in their pathogenesis. Adler's lab developed a peptide that inhibits the function of MARCKS and has published numerous papers demonstrating that MARCKS is integral to airway mucus secretion, inflammation, and cancer metastasis. The peptide has been developed as an inhaled drug and was highly successful in separate phase 2 clinical trials in patients with each of these diseases.

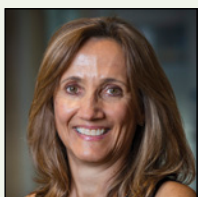
Email: kbadler@ncsu.edu



Rajula Elango Alleva, Ph.D., is a tenure-track investigator in the Genome Integrity and Structural Biology Laboratory at NIEHS. She received her Ph.D. from the University of Iowa and completed her postdoctoral training from Harvard Medical School. Elango Alleva's research focuses on understanding the intricate interplay between various DNA lesions and associated repair pathways in mammals. In particular, her group is interested in understanding how DNA-protein crosslinks (DPCs), a highly deleterious DNA lesion, is recognized, processed, and repaired in mammalian cells. Her group adapts state-of-the-art, high-throughput sequencing techniques and genetic engineering technologies to track the molecular intermediates formed during the repair of DPCs. Since DPCs are routinely formed from exposure to chemical and environmental stressors, unraveling the mechanism of repair of DPCs can have a global impact on human health. *Email:* rajula.elango@nih.gov



Hugh Crumley, Ph.D., leads graduate and postdoctoral teaching development at Duke University. He is the founding director of Duke's Certificate in College Teaching and directs the Preparing Future Faculty program, supporting early-career scientists and scholars in developing teaching experience and preparing for academic careers. His work focuses on helping graduate instructors reflect on their teaching, receive feedback, and translate teaching experience into academic job materials. He regularly consults with institutions in the U.S. and U.K. on graduate teaching preparation and faculty development. *Email:* crumley@duke.edu



Ilona Jaspers, Ph.D. After receiving her Ph.D. in environmental health sciences from New York University studying the effects of the air pollutant ozone on respiratory epithelial cells, Jaspers came to the University of North Carolina at Chapel Hill (UNC-Chapel Hill) for a postdoctoral training opportunity in the Center for Environmental Medicine, Asthma, and Lung Biology (CEMALB). Since starting her faculty position at UNC-Chapel Hill in 2001, she has been continuously funded by NIH, Environmental Protection Agency, and Department of Defense, and rose through the ranks to become a professor in the Department of Pediatrics, with joint appointments in microbiology and immunology, and environmental sciences and engineering. She also had a variety of leadership roles, most recently as the director of the CEMALB, where she was the PI on a cooperative agreement with the EPA entitled, "Convergence Science in Environmental Health – COSINE)" and directed a training program in the School of Medicine, the Curriculum in Toxicology and Environmental Medicine. In January 2025, she transitioned to a new position at NIEHS/National Heart, Lung, and Blood Institute, where she was a tenured senior investigator and the chief of a new NIH-wide center examining the health effects caused by extreme weather conditions (heat, drought, etc.), natural disasters (floods, hurricanes), and emerging environmental exposures (wildfires, airborne/waterborne pollutants). Due to a change in priorities of the current U.S. administration, these research efforts were dismantled, and Jaspers is now a professor in the Department of Pediatrics at UNC-Chapel Hill. For more than 25 years, Jaspers has used in vitro, in vivo, human clinical, computational, and epidemiological experimental approaches to study the respiratory health effects of inhaled toxicants, including ambient air pollutants, military burn pit smoke, wildfire smoke, tobacco products, and cannabidiol vaping products. Jaspers is particularly interested in the mechanisms by which inhaled toxicants can modify respiratory immune health, the potential adverse health consequences susceptible populations may suffer, and developing innovative solutions to these exposures. *Email:* ilona_jaspers@med.unc.edu



Humphrey Hung-Chang Yao, Ph.D., is the senior principal investigator of the Reproductive Developmental Biology Group at NIEHS. Before he joined NIEHS, he was a tenured associate professor in the Department of Comparative Biosciences at the University of Illinois Urbana-Champaign, where he was the PI of two R01s, co-PI of a P20, and preceptor of a T32 award. At NIEHS, he was the mentor of two K99/R00 awards and PRAT awards, and co-mentor of four K99/R00 awards. Yao's research focuses on sexual differentiation and reproductive organ formation and the environmental impacts on these processes. Yao has extensive experience in career development and funding process in both extramural and intramural arenas: he served on various search committees, tenure and promotion committees, NIH study sections, and career development panels. He was also in leadership positions in various scientific societies. *Email:* humphrey.yao@nih.gov

WORKSHOP 2: Rodbell B/C | 12:40 – 1:40 p.m.

Exploring Career Pathways: Finding Your Fit in Biomedical Sciences

Rebekah Layton, Ph.D., CMC, PCC

Teaching Assistant Professor

Associate Chair, Education and Training

University of North Carolina at Chapel Hill

Email: rlayton@unc.edu



Description of Workshop:

Career options for biomedical research trainees are expansive, and sometimes it can feel overwhelming to even know where to start. Join us to learn about tools and resources that can support exploration and preparation for a wide variety of careers! Participants will explore professional pathways and learn processes to help identify career options they are excited to pursue. As a participant in this workshop, you will have the opportunity to increase your familiarity with multiple career pathways, identify opportunities that align with your unique skills and personal values, discover effective strategies for determining whether a specific job or career path is the right fit, design experiences that will enhance your confidence, expand your professional network, and build a personalized career development plan. Take this opportunity to ensure you will be ready to hit the ground running when it's time to transition into your next role. Begin the job search from wherever you are on your career journey — and find the next right step for you!

Speaker Bio:

Rebekah Layton, Ph.D., CMC, PCC, leads curriculum modernization, trainee professional development, faculty development, and alumni engagement at the UNC School of Medicine, where she is the associate chair of Education and Training and a teaching assistant professor in the UNC Microbiology and Immunology Department. Formerly, she spent a decade developing and directing innovative professional development programs for 1,000+ biomedical graduate students and postdoctoral trainees in the UNC Office of Biomedical Science Training and Research. Layton earned her Ph.D./M.A. at the University at Albany-State University of New York, and completed postdoctoral training at the UNC School of Medicine. She is also a professional certified coach through the International Coach Federation, a certified mentor coach, a CIMER-trained facilitator for mentor training to enhance the experience of trainees, and currently serves as the president-elect for the Graduate Career Consortium, the leading voice in graduate-level career and professional development. Layton is passionate about improving the academic training environment for graduate and postdoctoral scholars using evidence-based research and data-driven solutions.

WORKSHOP 3: F193 | 12:40 – 1:40 p.m.

Pathway to Medical School, M.D./Ph.D., and Ph.D. Programs: Strategies for a Strong Application

Andrea Liu

Assistant Dean, Admissions

Assistant Director, Medical Scientist Training Program (M.D./Ph.D.)

Integrative Health and Wellness Coach

Duke University School of Medicine

Email: andrea.liu@duke.edu



Description of Workshop:

Hear directly from an admissions expert about how graduate and medical school applications are evaluated. From this workshop, you will gain a complete understanding of the medical school, MSTP, and Ph.D. application process, including admissions requirements, timelines, and tips to make your application stand out. Designed for those considering advanced training in biomedical science or medicine.

Speaker Bio:

Andrea Liu, assistant dean of admissions for the Duke University School of Medicine, has worked in the medical education field for more than 30 years. She also serves as assistant director for the school's Medical Scientist Training Program, a position she has held since 2011. Liu has extensive experience in student recruitment, admissions, student advising and retention, programming, policy development, budgeting, staffing, public relations, and compliance, as well as administration of NIH training grants. Prior to joining Duke in 2005, Liu spent 10 years at Washington University in St. Louis serving as program administrator for the Division of Biology and Biomedical Sciences' M.D./Ph.D. program. She received her bachelor's degree in industrial and organizational psychology from Washington University in St. Louis. Liu has two boys; both completed Ph.D. degrees and are now working in academia and industry positions. She enjoys reading, cooking, and traveling.

Break | 1:40 – 2:00 p.m.

Networking With Exhibitors (Module D and E Hallways)

Session Three

WORKSHOP 4: Rodbell A | 2:00 – 3:00 p.m.

Your Digital Footprint: Optimizing Your Online Professional Image

Gail McCowan, MBA, CCSP

Career Coach and Job Search Consultant

Gail McCowan Career Services

Email: mccowangail@gmail.com



Description of Workshop:

This workshop offers practical tips and actionable strategies for those pursuing industry positions to enhance their digital profiles and effectively showcase their professional identities. Participants will also learn how to craft compelling resumes that make a memorable and professional impression both online and on paper.

Speaker Bio:

Gail McCowan, MBA, CCSP, is a career coach and educator who combines over a decade of career advising and training with a background as an engineer at IBM and a human resources generalist at GE to offer clients straightforward, step-by-step strategies for moving forward in their careers. She is a Certified Career Services Provider through National Career Development Association and has experience working with clients from diverse backgrounds and industries. In addition to coaching, McCowan stays up to date on the latest job-seeking techniques by leading classes on LinkedIn, resumes, and interviewing at Wake Tech Community College. She holds an MBA from the UNC Kenan-Flagler Business School and a B.S. from Northwestern University. She can be reached at www.linkedin.com/in/gailmccowan.

PANEL DISCUSSION 3: Rodbell B/C | 2:00 – 3:00 p.m.

Industry

Joe Dahl, Ph.D. (BioSkryb Genomics)

LakshmiDevi Ethirajan, Ph.D. (SmaBio Labs)

Kirsten Hoff, Ph.D. (Fujifilm Diosynth Biotechnologies)

Juliet Obi, Ph.D. (Eli Lilly and Company)

Erin Romes, Ph.D. (Grifols)

This highly interactive panel will explore diverse career opportunities within the biomedical and biotechnology industries through open discussion and audience engagement. Panelists will share their career paths, key decision points, and lessons learned while transitioning into and advancing within industry roles, with discussion spanning research and development, regulatory affairs, data science, consulting, and business development. Whether you're interested in working at a biotech startup, a pharmaceutical company, or a global health care organization, this discussion will provide valuable perspectives on navigating and thriving in the industry.

Panelists:



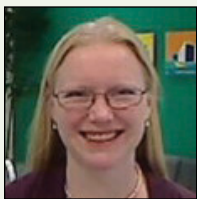
Joe Dahl, Ph.D., began his scientific pursuits at Cabrillo Community College in Aptos, California. He completed both his bachelor's and doctoral studies at the University of California, Santa Cruz. This provided his foundation in DNA sequence analysis, single-molecule biophysics, structural biology, and traditional biochemical analysis. He completed postdoctoral training at NIEHS, where he combined his molecular biology tool set with yeast genetics to study the interplay between DNA replication and disease. Dahl was recruited into the private sector in 2021 and now leads the advanced R&D program at BioSkryb Genomics. His current professional passion is innovating custom tools to enable collaborators and clients to probe tissue heterogeneity at the single-cell level.

Email: joe.dahl@bioskryb.com

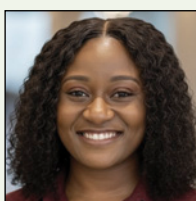


LakshmiDevi Ethirajan, Ph.D., is a visionary leader in pharmaceutical research and contract development, combining scientific expertise with strategic business acumen. As co-founder and CEO of SmaBio Labs, she has led the company's growth as a trusted CDMO, offering end-to-end drug development solutions from early-stage discovery to pilot-scale production. With a Ph.D. in business administration specializing in project management and credentials as a project management professional, she brings a rare blend of technical insight and operational excellence. Passionate about advancing pharmaceutical innovation, Ethirajan continues to drive cutting-edge research, industry collaborations, and streamlined development pathways to accelerate life-changing therapies.

Email: lethirajan@smabiolabs.com



Kirsten Hoff, Ph.D., received her bachelor's degree from the University of Maryland, Baltimore County in biochemistry and molecular biology. She received her Ph.D. in biochemistry from Duke University under the mentorship of Leonard Spicer, Ph.D., and Richard Brennan, Ph.D. She was then an IRTA postdoctoral fellow at NIEHS in William Copeland's, Ph.D., group for six years. While at NIEHS, she served on the NTA Steering Committee supporting initiatives for those interested in transitioning to industry. In 2019, she made the move to industry taking the scientist II role in the Upstream Process Development Group at Fujifilm Diosynth Biotechnologies. Over the last six years, she has grown her role and now serves as an associate principal scientist group leader focused on microbial fermentation in the Process Characterization team. In her role, she guides her team in the purpose and design of process characterization studies to support programs transitioning to a commercial state. In her free time, she likes to read, garden, cook, and play with her two children. *Email:* hoffkiri@gmail.com



Juliet Obi, Ph.D., is a biophysical chemistry advisor at the Eli Lilly Biotechnology Center in San Diego, where she leads the implementation of high-throughput developability assays to accelerate AI/ML-driven biologics discovery. She earned her Ph.D. in pharmaceutical sciences from the Deredge Lab in May 2025, with her research focused on the structural and dynamic characterization of the dengue virus RNA polymerase to support structure-based drug design initiatives. Beyond her scientific pursuits, she is an active contributor to several professional organizations and is passionate about community engagement and mentorship. *Email:* juliet.obi@lilly.com



Erin Romes, Ph.D., is a principal research scientist at Grifols Therapeutics LLC. Romes is the technical lead for the protein purification group in protein discovery. In this new role, she utilizes experience from the process development group to lead the development, scale-up, and production of protein test articles to be used for in vitro and in vivo studies to develop novel processes and therapies. She utilizes her knowledge of protein biochemistry to evaluate new protein/indication matches and manages projects that evaluate protein activity and possible mechanism of action. She was an NIEHS IRTA fellow in the lab of Robin Stanley, Ph.D., where she studied the structure and mechanism of early pre-60S ribosome assembly factors. Romes completed her Ph.D. in biochemistry and biophysics from the University of North Carolina at Chapel Hill under the direction of Kevin Slep, Ph.D. *Email:* erin.romes@grifols.com

Break | 3:00 – 3:20 p.m.

Networking With Exhibitors (Module D and E Hallways)

WORKSHOP 5: Rodbell A | 3:20 – 4:20 p.m.

The Job Offer Formula: Turning Interviews Into Job Offers

Laura Marler, Ph.D.

Director, Office of Postdoctoral Services

NIH Office of Intramural Training and Education

Email: laura.marler@nih.gov



Description of Workshop:

Turning interviews into offers takes more than strong credentials. It requires telling the right stories, demonstrating fit, and guiding the conversation. In this practical workshop, fellows will learn a step-by-step approach to prepare for interviews effectively and perform with confidence. Topics include decoding job descriptions, translating research experience into employer value, crafting concise STAR stories, answering behavioral and technical questions, asking high-impact questions, managing virtual and in-person formats, and closing the interview.

Speaker Bio:

Laura Marler, Ph.D., is the director of the Office of Postdoctoral Services in the NIH Office of Intramural Training and Education (OITE). Marler is passionate about helping biomedical trainees navigate the uncertainty of career decisions while attending to their personal, professional, and scientific development. Marler received a B.S. in chemistry from Furman University and completed her doctoral training in biology at the NIH as a student in the NIH-Johns Hopkins University Graduate Partnerships Program. She joined the OITE in 2019, where she has enjoyed working with trainees at all levels to develop the career skills and resilience they need to make vital scientific contributions.

PANEL DISCUSSION 4: Rodbell B/C | 3:20 – 4:20 p.m.

Inside the Hiring Process

Oluwadamilola (Olu) Lawal, Ph.D. (bioMérieux)

Michael Maciekowich, M.S. (Astron Solutions)

Juliet Obi, Ph.D. (Eli Lilly and Company)

Jennifer Russum (BioAgilytix)

Matthew Shearin (WEP Clinical)

Job applications and interviews can be a difficult terrain for job applicants to navigate. Guidance and information about what the hiring process demands from job candidates will be helpful for preparation, landing a job, and getting feedback from the hiring team. This panel will generally shed light into the expectations of the hiring team from job candidates how best they can prepare for every aspect of the hiring process.

Specifically, we will be asking questions bordering on CV adjustment for different jobs, the application, and interview process. We are also interested in what the hiring team wants to know about the interviewee and the role they are applying for, what questions the job candidate can ask, and how salary negotiation works following a job offer. This panel will also proffer insightful answers regarding whether a job is a good fit for a candidate and how to relate with interviewers across the different tiers in the organization.

Panelists:

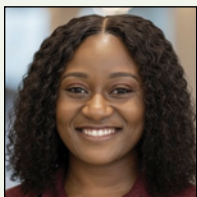


Oluwadamilola (Olu) Lawal, Ph.D., is currently a quality control analyst at bioMérieux. He earned a B.S. in biology from Medgar Evers College and a Ph.D. in neurobiology from Duke University. In the spring of 2023, he joined NIEHS as a postdoctoral fellow, where he studied the neural circuits underlying innate behaviors, before transitioning to his current industry role in mid-2025. In his current role, he performs a broad range of biochemical testing in a fast-paced, FDA-regulated medical device and diagnostics environment, ensuring rigorous compliance with quality, regulatory, and safety standards. *Email:* oluwadamilola.lawal@biomerieux.com

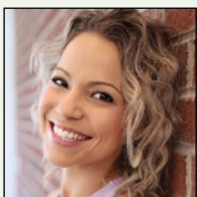


Michael Maciekowich, M.S., is a national director for Astron Solutions. His areas of expertise include the development, design, and implementation of executive, physician, and employee base pay systems, short- and long-term incentive programs, sales incentive programs, and performance management systems in all industries. Maciekowich has more than 40 years of consulting and industry compensation experience. Prior to Astron, Maciekowich worked for numerous consulting firms, such as The Hay Group; Towers Watson; Adams, Nash, and Haskell; and the Omni Group. He began his career in 1978 at Zenith Electronics, continuing his career at Honeywell and the American Hospital Association before moving into consulting. Maciekowich is a sought-after speaker in total rewards program design. He has presented at national American Society for Healthcare Human Resources Administration (ASHHRA) and WorldatWork conferences, as well as numerous local ASHHRA and Society for Human Resource Management (SHRM) chapters. His topics include current trends in compensation program design, design and utilization of gamification strategies in employee engagement, creative performance management program design, customer satisfaction driven rewards systems,

and Compensation 101 for Beginners. Maciekowich is an active member of WorldatWork, ASHHRA, and SHRM. He is also a member of various local and state human resource associations across the country. He received a lifetime achievement award from WorldatWork. Maciekowich received bachelor's degrees in political science and philosophy from Loyola University Chicago and a master's degree in industrial relations from the Loyola University Chicago Quinlan School of Business. He can be followed on LinkedIn at www.linkedin.com/in/michaelmaciekowichastron.



Juliet Obi, Ph.D., is a biophysical chemistry advisor at the Eli Lilly Biotechnology Center in San Diego, where she leads the implementation of high-throughput developability assays to accelerate AI/ML-driven biologics discovery. She earned her Ph.D. in pharmaceutical sciences from the Deredge Lab in May 2025, with her research focused on the structural and dynamic characterization of the dengue virus RNA polymerase to support structure-based drug design initiatives. Beyond her scientific pursuits, she is an active contributor to several professional organizations and is passionate about community engagement and mentorship. She can be followed on LinkedIn at www.linkedin.com/in/juliet-obi-7170776b.



Jennifer Russum brings nearly 12 years of experience in scientific recruitment, with a strong focus on identifying and attracting talent for life sciences organizations. She focuses on connecting strong talent with impactful opportunities and provides practical, straightforward guidance on the hiring and interview process. Her career has taken her around the globe, having lived and worked across North America, Africa, Europe, and Asia, where she has blended her educational background in international psychology with recruitment. Russum currently serves as the manager of talent acquisition at BioAgilytix, a CRO specializing in bioanalytical services. She is also a member of Triangle Women in STEM and volunteers as a career coach with the local Dress for Success N.C. chapter. *Email:* jennifer.russum@bioagilytix.com



Matthew Shearin is a relationship development specialist at WEP Clinical, a contract research organization with a global footprint. He supports biotechnology and pharmaceutical companies across WEP's core service lines: expanded access and preapproval named patient programs, clinical trial nursing and home health for clinical trials, market access and regulatory, and clinical trial services. His focus spans rare diseases, oncology, and advanced therapies, partnering with sponsors from preclinical development through commercialization. Prior to WEP Clinical, Shearin was an account executive at Actalent Services, where he supported quality and laboratory operations for commercialized drug products across contract manufacturing and sponsor manufacturing environments. A native North Carolinian, Shearin is committed to growing the local STEM footprint through regional and national organizations, such as PDA Southeast and ISPE. He engages with the STEM community through university events, pharma conferences, and community college speaking events, drawing on his background as a former teacher and his passion for making a positive impact. *Email:* mshearin@webclinical.com

PANEL DISCUSSION 5: Rodbell F193 | 3:20 – 4:20 p.m.

From Postbac to Professional

Melissa Bostrom, Ph.D. (Duke University)

Patrick Brandt, Ph.D. (University of North Carolina at Chapel Hill)

Jemma Strauss DeFilipp (NIEHS/North Carolina State University)

Liara Gonzalez, D.V.M., Ph.D. (North Carolina State University)

Abra Granger (Duke University)

Stress? Thy name is graduate and professional school applications. This panel aims to give insight into what it takes to be a successful graduate student and applicant. Comprised of current graduate students and faculty involved in graduate admissions and student development, we hope to answer your burning questions and provide clarification regarding the application process and first few semesters of graduate school.

We will be asking questions related to what makes a successful applicant, what should applicants emphasize in their statements, and what skills should potential applicants focus on developing, as well as taking questions from the audience.

Panelists:



Melissa Bostrom, Ph.D., provides strategic direction and leadership in graduate student professional development for 3,500 Ph.D. and research master's students in 80+ programs at Duke University. She directs the Emerging Leaders Institute and Professional Development Series, manages the Professional Development Grant, founded and serves as managing editor of the Professional Development Blog, and served as co-PI on the team that built Duke OPTIONS, an online professional development planning tool for Ph.D. students.

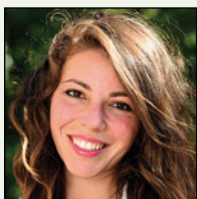
She serves on the Administrative Oversight Team for the University Center for Exemplary Mentoring, a campus initiative funded by the Alfred P. Sloan Foundation for Ph.D. students in the physical sciences and engineering.

Email: melissa.bostrom@duke.edu



Patrick Brandt, Ph.D., is the senior director of Career Development and Science Outreach at the University of North Carolina at Chapel Hill. He directs career awareness and professional skills development programming that serves 1,000+ graduate student and postdoctoral trainees in the life sciences. He also directs the ImPACT internship program, which helps UNC Ph.D. candidates gain hands-on training that furthers their career paths. Brandt leads the statewide North Carolina DNA Day initiative, which for more than 15 years has sent scientists

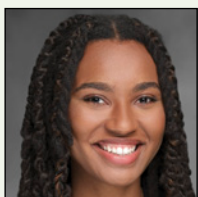
annually to high schools across North Carolina to get students excited about learning science. Brandt grew up in Upstate New York and earned a Ph.D. in biochemistry from the University of Rochester School of Medicine. After postdoctoral training at NIEHS, he joined the Office of Graduate Education in 2008.



Jemma Strauss DeFilipp is a predoctoral fellow in the Calcium Signaling in Health and Disease Group within the Molecular and Cellular Biology Laboratory at NIEHS, and a Ph.D. candidate in comparative biomedical sciences at North Carolina State University. Her research focuses on calcium channels as therapeutic targets in immune-mediated disease. Previously, she trained as a postbaccalaureate fellow in the Neurobehavioral Core Laboratory at NIEHS. Her work integrates in vivo disease models with physiological and toxicological endpoints to evaluate both efficacy and safety of channel modulation. Current projects center on psoriasis and long-term safety profiling, with the goal of advancing clinically actionable targets. *Email:* jemma.strauss@nih.gov



Liara Gonzalez, D.V.M., Ph.D., is a professor of gastroenterology and equine surgery at North Carolina State University in Raleigh, N.C. Gonzalez completed her veterinary degree at the Cornell University College of Veterinary Medicine in 2006. She then did a one-year rotating internship at New England Equine Practice followed by a large animal surgery residency at the NC State Veterinary Hospital. She became a diplomate of the American College of Veterinary Surgery in 2011. She remained at NC State and defended her doctoral thesis in 2014. Gonzalez' clinical and research focus is the study of intestinal disease and utilizing large animal translational models to hasten clinical application of novel findings. She is particularly interested in identifying improved means to determine tissue viability following severe intestinal injury, as well as studying the role of intestinal stem cells in modulating mucosal barrier repair. This has included research aimed at minimizing intestinal injury during allograft storage to improve transplant patient outcomes. Her lab utilizes in vivo, in vitro (2D and 3D), and ex vivo model systems to answer clinically relevant questions. Gonzalez hopes to apply her knowledge and expertise in advanced laboratory techniques to help solve clinically significant problems and further elucidate therapeutic targets that will ultimately improve patient survival. *Email:* imgonza4@ncsu.edu



Abra Granger is an M.D./Ph.D. student at the Duke University School of Medicine and a former NIH IRTA postbaccalaureate fellow at NIEHS. Her research at NIEHS focused on the structure and function of dGTPase, using molecular dynamics simulations in combination with wet lab approaches to investigate substrate-binding mechanics and catalytic reactions. Through this work, she explored how enzyme conformational dynamics influence activity and genomic stability. Her postbaccalaureate training fostered a strong interest in bridging basic science and clinical medicine, ultimately guiding her decision to pursue physician-scientist training. She is committed to advancing translational research, improving patient outcomes, and mentoring trainees in science and medicine. *Email:* abra.granger@nih.gov

CV/RESUME REVIEW

Virtual | Wednesday, April 22 • 10:00 a.m. – noon

Meet one-on-one with experienced professionals for personalized CV feedback tailored to your career goals. During these focused review sessions, fellows will have the opportunity to connect directly with reviewers from academia, industry, and government pathways.

Whether you're refining your CV for your next application or exploring how to best position your experiences for a specific field, reviewers will offer practical insights, targeted suggestions, and strategies to help your CV stand out. Come prepared with question and leave with actionable feedback and greater confidence in your career materials.

Scan the QR code or visit <https://bit.ly/4ss5KmZ> to view our CV/resume reviewers' biographies.

Session 1: 10:00 – 10:30 a.m.

Session 2: 10:30 – 11:00 a.m.

Session 3: 11:00 – 11:30 a.m.

Session 4: 11:30 a.m. - noon

All times are EDT.



LIST OF EXHIBITORS



Alcami is a U.S.-based contract development and manufacturing organization headquartered in North Carolina with 45+ years of experience advancing pharmaceuticals and biologics from development to delivery. The company provides fully integrated lab services, drug product manufacturing, and cGMP pharma storage and support services, including environmental monitoring, calibration, and validation. Alcami provides comprehensive drug product manufacturing and support services, spanning from preclinical to commercialization, as well as wide-ranging analytical lab services for pharma and biotech companies. Alcami's Durham site is a GMP laboratory that employs bench scientists specializing in bioseparation (HPLC, mass spectrometry, etc.) and bioassay (cell culture, ELISA, etc.) method establishment and testing.

Exhibitor:

Elena Dukhovlinova, Ph.D., Senior Principal Scientist

Email: elena.dukhovlinova@alcami.com



BioSkryb Genomics is a single-cell multiomics company delivering high-fidelity genomic and transcriptomic data from individual cells. Built on its patented Primary Template-directed Amplification technology, BioSkryb enables comprehensive, low-bias analysis of single-cell genomes and integrated multiomic profiles that accurately reflect underlying biology.

BioSkryb's platform includes single-cell DNA and multiomic workflows, advanced bioinformatics through BaseJumper®, and expert laboratory services. Together, these solutions support applications across discovery research, translational biology, and therapeutic development, including clonal evolution, somatic mosaicism, measurable residual disease, and rare cell analysis.

Headquartered in Durham, North Carolina, BioSkryb partners with leading academic institutions, biopharma companies, and diagnostics developers to generate high-confidence datasets that power biological discovery, precision medicine, and next-generation AI-enabled analysis.

Exhibitor:

Liz Mahoney, Sales Manager, South Central U.S.

Email: liz.mahoney@bioskryb.com



Brandtech is a supplier of high-quality liquid handling instruments and laboratory equipment, serving life science and analytical labs. The company represents trusted brands and provides pipettes, robotic LHS, dispensers, and vacuum technology. They are the U.S. and Canadian division of the Brand Group, that offer BRAND®, VACUUBRAND®, and VITLAB® laboratory equipment. Their products are manufactured in their German facilities with the highest standards for quality and service to ensure reliability and efficiency in the lab.

Exhibitor:

Janice Lanier, Sales Representative

Email: janier@brandtech.com



The **Foundation for Advanced Education in the Sciences (FAES)** is a nonprofit organization located at the NIH that conducts advanced educational programs and supports activities to promote the productivity and attractiveness of professional life at the NIH. FAES programs complement the work of NIH in accomplishing its mission of research and training in the biomedical sciences. FAES was created in 1959 to foster collaboration and community among scientists — allowing the interdisciplinary exchange of ideas and access to the latest knowledge, tools, and techniques to move science forward. Today, FAES fulfills its mission with dynamic services for emerging and established science scholars. They conduct academic programs and interactive workshops; provide resources for teaching and learning at the NIH; foster a positive work environment with cultural programs, musical performances, and events on and off the NIH campus; and administer essential services for trainees, including health insurance coverage and housing support during their research programs at NIH.

Email: registrar@faes.org



The **NIEHS Library** is YOUR partner in research. It is the library's vision to serve as an integral, effective, and preeminent part of the research efforts and accomplishments at NIEHS by providing information services of the highest caliber that meet expressed and anticipated needs of the research community and administrative staff, especially through innovative technological means. The library manages information and knowledge to advance environmental health by providing access to information and educating users in how to access that information, creating and maintaining information and knowledge systems using state-of-the-art technology, and by participating in the development of information and knowledge management policies. Some of the services we provide are literature searching, Interlibrary Loan and document delivery, Animal Care and Use Committee required searches, EndNote training and support, bibliometrics and citation reports, scholarly communications support, as well as training on author profiles, publishing, citations databases, and more. Our library services can support your research and save you time and effort!

Exhibitors:

Adonna Thompson, Library Manager

Amelia Muzzarelli, Research Librarian

Email: library@niehs.nih.gov



NIH NIEHS Office of Fellows' Career Development The mission of the Office of Fellows' Career Development (OFCD) is to provide fellows in training at NIEHS with the professional skills and career development opportunities needed to excel in their future careers. The OFCD aims to ensure that NIEHS fellows have an outstanding training experience that allows them to successfully transition to independence in their chosen career with confidence.

From 2003-2013, The Scientist conducted a survey of the "Best Places to Work for Postdocs," and NIEHS was voted in the top 10 of this ranking for four consecutive years. NIEHS offers predoctoral, postbaccalaureate, and postdoctoral training fellowships.

The OFCD helps trainees gain core competencies in six fundamental areas:

- Career Readiness
- Communication
- Ethics and Responsible Conduct
- Leadership and Management
- Teaching and Mentoring
- Well-Being

Exhibitors:

Mercedes Arana, Ph.D., Director, Office of Fellows' Career Development

Hong Xu, Program Manager and Data Analyst

Katherine Hamilton, Science Education Coordinator

Edith Lee, M.P.A., Program Specialist

Email: NIEHS_OFCD@niehs.nih.gov



SmaBio Labs is a rapidly growing contract development and manufacturing organization specializing in drug discovery, formulation development, and analytical services. Located in Research Triangle Park, N.C., our 9,000-square-foot facility features kilogram-scale API manufacturing, cGMP synthesis capabilities, stability storage, and advanced bioanalytical solutions to support pharmaceutical and biotech innovators. From early-stage research to pilot-scale production, we provide seamless concept-to-commercialization support, including custom formulation strategies, process optimization, and regulatory-driven analytical development. With a commitment to scientific excellence, cutting-edge infrastructure, and a client-focused approach, SmaBio Labs ensures agility, precision, and reliability, driving the next generation of life-changing therapies.

Exhibitor:

Sucharitha Murugu, Manager, Marketing and Communications

Email: smurugu@smabiolabs.com



SynerG Biopharma is a Strategic Development and Delivery Partner™ to biopharma innovators. We bring together integrated scientific, regulatory, technical, and strategic consulting expertise across the development lifecycle. With a global reach of 400+ professionals across North America, Europe, and APAC, Syner-G is committed to collaborating with our clients to tackle the complexity of drug development and commercialization, merging scientific rigor, operational excellence, and transformative thinking to reduce risk, accelerate progress, and deliver inspiring outcomes that advance science to improve patient lives. To learn more, visit synergbiopharma.com.

Exhibitor:

Katie Glenn, Ph.D., Medical Writer Consultant 1

Email: kglenn456@gmail.com



Takara Bio is a 100-year-old company with humble beginnings in sake brewing and now offers the only true single-cell spatial omics kits on the market, as well as many other molecular biology tools for scientific discovery. NIEHS finds our low-input RNA-Seq library prep kits and Macherey-Nagel nucleic acid purification kits very useful. Talk to your rep to hear the whole Takara story and check out our new spatial transcriptomic and multiomic kits [here](#).

Exhibitor:

Jason Whitham, Ph.D., Takara Bio Spatial Omics Executive Account Manager

Email: jason_whitham@takarabio.com



Triangle Biotech Tuesday (TBT) started in 2012 as a casual way for people in the life sciences around Research Triangle Park to meet, talk, and build community. What began as a small gathering after work has grown into a registered 501(c)(3) nonprofit organization run by an all-volunteer board of directors that hosts the largest professional networking events in the region. Every year, on the second Tuesday of each month from February until November, TBT brings together hundreds of professionals, students, and entrepreneurs in the biotech and life sciences fields from across government, industrial, and academic sectors to connect and share ideas. We value authentic connections, inclusivity, and collaboration. Our events are open, welcoming, and focused on building relationships that support both personal and professional growth. Our mission is to keep North Carolina's life sciences community connected. By bringing together people from across research, business, education, and startups, we help strengthen the Triangle's biotech network and support the broader N.C. life sciences ecosystem.

Exhibitors:

Oswaldo Lozoya, Ph.D., M.S.

Email: oswaldo.lozoya@trianglebiotechtuesday.com

Anne Ballou, Ph.D.

Email: anne.ballou@trianglebiotechtuesday.com

Branden Caffoe

Email: branden.caffoe@trianglebiotechtuesday.com

Deepthi Rajagopalan

Email: deepthi@trianglebiotechtuesday.com

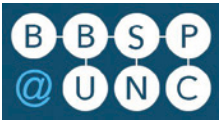


The **UNC Blood Research Center Clinical Research Program** serves the bleeding and clotting disorder community through the facilitation and execution of a diverse portfolio of high-impact clinical research studies. Sponsors include both federal partners as well as the private biopharmaceutical companies. We aim to connect study sponsors, investigators, and eligible patient populations with innovative clinical research opportunities, which further the institution's commitment to advancing human health through education, research, and patient care. Our program places an emphasis on improving the health and well-being of North Carolinians. Recently, investigators within our program have authored three NEJM publications and served as principal investigators on phase III clinical trials that resulted in the first two hemophilia gene therapies to become FDA approved and commercialized. This program is headquartered in Chapel Hill, N.C.

Exhibitor:

Brett Phillips, M.A., PMP, CCRP

Email: brett_phillips@med.unc.edu



UNC Biological & Biomedical Sciences Program (BBSP) The Biological & Biomedical Sciences Program (BBSP) at UNC-Chapel Hill is an umbrella training program for bioscience Ph.D. students. BBSP provides individualized advising, supportive mentorship, and professional skills training during the first year to establish a solid foundation of skills. The Ph.D. programs selected by BBSP students at the end of their first year provide comprehensive scientific training at the highest level.

Exhibitors:

Patrick Brandt, Ph.D.

Email: pdb@unc.edu

Alexis Branch, Ph.D.

Email: ahbranch@email.unc.edu

Laetitia Meyrueix, Ph.D.

Email: laetitia_meyrueix@med.unc.edu



UNC Biomedical Science Training and Research (BioSTAR) The Biomedical Science Training and Research (BioSTAR) Office supports the development of students, postbacs, and postdocs as future biomedical science leaders. We promote innovative recruitment and training, stimulate purposeful career development, remove barriers to success, and foster a collaborative research community.

Exhibitor:

Christiann Gaines, Ph.D.

Email: christiann_gaines@med.unc.edu



UNC School of Medicine M.D./Ph.D. Program The primary goal of the University of North Carolina at Chapel Hill School of Medicine's M.D./Ph.D. Program is to train an outstanding group of young men and women who are committed to become physician-scientists, fully capable of bridging the gap between basic science and clinical medicine.

Exhibitors:

Alison Regan

Email: aregan@med.unc.edu

Amber Barbour

Email: amber_brosius@med.unc.edu



Waters is a global leader in life sciences and diagnostics, dedicated to accelerating the benefits of pioneering science through analytical technologies, informatics, and service. With a focus on regulated, high-volume testing environments, our innovative portfolio harnesses deep scientific expertise across chemistry, physics, and biology. We collaborate with customers around the world to advance the release of effective, high-quality medicines, ensure the safety of food and water, and drive better patient outcomes by detecting diseases earlier, managing routine infections, and combating antibiotic resistance. Through a shared culture of relentless innovation, our passionate team of colleagues turn scientific challenges into breakthroughs that improve lives worldwide.

Exhibitor:

Jamie Lascalette, Principal System Account Manager

Email: jamie_lascalette@waters.com



The NIEHS Office of Fellows' Career Development



The Office of Fellows' Career Development (OFCD) provides intramural fellows in training at NIEHS with the professional skills and career development opportunities needed to excel in their future careers, regardless of their scientific field of study. The OFCD accomplishes this goal by working closely with the various divisions of NIEHS to provide NIEHS fellows with the resources, support, and network they need to succeed, and by collaborating with the NIH Office of Intramural Training and Education (OITE) to ensure that NIEHS fellows have an outstanding training experience and are prepared for the transition to independence in their chosen career path.

Contact:

Mercedes Arana, Ph.D.
Director, Office of Fellows'
Career Development, NIEHS
arana@niehs.nih.gov

Hong Xu
Program Manager and Data Analyst
Office of Fellows' Career
Development, NIEHS
xuh2@niehs.nih.gov

Katherine Hamilton
Summer Internship and Postbaccalaureate
Program Manager, Office of Fellows' Career
Development, NIEHS
hansen2@niehs.nih.gov

Edith Lee, M.P.A.
Program Specialist, Office of Fellows'
Career Development, NIEHS
leeem@niehs.nih.gov

www.niehs.nih.gov/careers/research/fellows

Acknowledgments

This Career Symposium is organized by dedicated NIEHS fellows who have volunteered their time and efforts, along with the support of the Office of Fellows' Career Development and many individuals working behind the scenes. This event would not be possible without the contributions of the organizations and individuals acknowledged in this booklet. We extend our heartfelt appreciation to the following contributors:

Office of Fellows' Career Development

Mercedes Arana, Ph.D., Director, Office of Fellows' Career Development, NIEHS

Hong Xu, Program Manager, Office of Fellows' Career Development, NIEHS

Katherine Hamilton, Science Education Coordinator, Office of Fellows' Career Development, NIEHS

Edith Lee, M.P.A., Program Specialist, Office of Fellows' Career Development, NIEHS

NIEHS Leadership

Kyle Walsh, Ph.D., Director, NIEHS and NTP

Darryl Zeldin, M.D., Scientific Director, Division of Intramural Research, NIEHS

Heather Patisaul, Ph.D., Scientific Director, Division of Translational Toxicology, NIEHS

Paul Doetsch, Ph.D., Deputy Scientific Director, Division of Intramural Research, NIEHS

J'Ingrid Mathis, M.S., Associate Director, Management, Executive Officer, NIEHS

David Balshaw, Ph.D., Director, Division of Extramural Research and Training, NIEHS

Trevor Archer, Ph.D., Deputy Director, NIEHS

Michael Fessler, M.D., Chief, Clinical Research Branch, NIEHS

Multimedia, Website, Security, and Support Services

Robby Robinson, M.S., Deputy Associate Director, Management, NIEHS

Joseph Poccia, Digital Design Manager, Office of the Director, NIEHS

Paul Cacioppo, Senior Art Director and Designer, Office of the Director, Contractor to NIEHS

Lois Wyrick, Graphic Designer, Office of the Director, Contractor to NIEHS

Erica Hinton, Editor, Office of the Director, Contractor to NIEHS

Charles Lipford, Conference Room Manager, Contractor to NIEHS

Nathan Getz, Audio Visual Conference Support Technician, Contractor to NIEHS

Justin Branch, Audio Visual Conference Support Technician, Contractor to NIEHS

Nathan Mitchiner, AV Production Team Lead, Contractor to NIEHS, NTT Data (NTT) Corporation

Chris Schnur, Multimedia Specialist, Contractor to NIEHS, NTT Data (NTT) Corporation

Cyndi Baker, Chief Administrative Officer, Division of Translational Toxicology, NIEHS

Vince Guerrero, Administrative Officer, NIEHS

Carolyn Emerson, Budget Lead, Administrative and Research Services Branch, NIEHS

Don Jackowski, Security Manager, Operations and Security Branch, NIEHS

Alexander Santago, Chief, Operations and Security Branch, NIEHS

Chris Roose, Operations and Security Branch, NIEHS

Frank Chao, Ph.D., Photographer, Predictive Toxicology Branch, Division of Translational Toxicology, NIEHS

NIEHS Security Team

The 2026 28th Annual NIEHS Biomedical Career Symposium Planning Committee

Osafu Egbon, Ph.D., Co-Chair, Biostatistics and Computational Biology Branch, NIEHS

Shruti Somai-Hyatt, Ph.D., Co-Chair, Genome Integrity and Structural Biology Laboratory, NIEHS

Kimberly Abt, Ph.D., Chair, Art, Photography, and Booklet Subcommittee, Reproductive and Developmental Biology Laboratory, NIEHS

Chioma Aloh, Ph.D., Chair, Career Panel Subcommittee, Genome Integrity and Structural Biology Laboratory, NIEHS

Anastasia Robinson, Ph.D., Chair, Exhibitors Subcommittee, Molecular and Cellular Biology Laboratory, NIEHS

Vaishnavi Venkat, Ph.D., Chair, CV Review Subcommittee, Biostatistics and Computational Biology Branch, NIEHS

Rajesh Bhardwaj, Ph.D., Career Panel Subcommittee, Molecular and Cellular Biology Laboratory, NIEHS

Yu-Ying Chen, Ph.D., CV Review Subcommittee, Reproductive and Developmental Biology Laboratory, NIEHS

Meklit Daniel, M.Phil., Art, Photography, and Booklet Subcommittee, Epidemiology Branch, NIEHS

Jemma Strauss DeFilipp, B.A., Career Panel Subcommittee, Molecular and Cellular Biology Laboratory, NIEHS

Michelle Fyle, Ph.D., CV Review Subcommittee, Systems Toxicology Branch, NIEHS

Kate Goodrich, B.S., CV Review Subcommittee, Predictive Toxicology Branch, NIEHS

Julia House, B.A., Exhibitors Subcommittee and Postbac Centered Workshop, Mechanistic Toxicology Branch, NIEHS

Ying Jin, Ph.D., Career Panel Subcommittee, Biostatistics and Computational Biology Branch, NIEHS

Suneet Kaur, Ph.D., Art, Photography, and Booklet Subcommittee, Molecular and Cellular Biology Laboratory, NIEHS

Ethan Levy, B.S., Lead, Postbac Centered Workshop, Biostatistics and Computational Biology Branch, NIEHS

Jiaqi Li, Ph.D., Career Panel Subcommittee, Biostatistics and Computational Biology Branch, NIEHS

Sarah Marks, Ph.D., Art, Photography, and Booklet Subcommittee, Genome Integrity and Structural Biology Laboratory, NIEHS

Elizabeth Meyer, B.S., Career Panel Subcommittee, Genome Integrity and Structural Biology Laboratory, NIEHS

Mahina Monsur, Ph.D., Art, Photography, and Booklet Subcommittee, Genome Integrity and Structural Biology Laboratory, NIEHS

Tapas Pradhan, Ph.D., Career Panel Subcommittee, Immunity, Inflammation, and Disease Laboratory, NIEHS

Austin Rau, Ph.D., Career Panel Subcommittee, Predictive Toxicology Branch, NIEHS

Logan Schuck, Ph.D., Career Panel Subcommittee, Genome Integrity and Structural Biology Laboratory, NIEHS

Arvind Chandra Shekhar, Ph.D., Exhibitors Subcommittee, Macromolecular Structure Group, NIEHS

Brett Shore, B.S., CV Review Subcommittee, Genome Integrity and Structural Biology Laboratory, NIEHS

Surbhi Sood, Ph.D., Exhibitors Subcommittee, Eukaryotic Transcriptional Regulation Group, NIEHS

Barrett Webb, B.S., Exhibitors Subcommittee, Neurobiology Laboratory, NIEHS

Xiaoyue Wu, Ph.D., Exhibitors Subcommittee, Molecular and Cellular Biology Laboratory, NIEHS

Akbar Zainu, Ph.D., Career Panel Subcommittee, Genome Integrity and Structural Biology Laboratory, NIEHS



Organized by the NIEHS Trainees' Assembly
Sponsored by the NIEHS Office of Fellows' Career Development