

WETP AWARDEE MEETING



Marriott Hotel, New Orleans, LA

January 27, 2010

WORKER EDUCATION AND TRAINING PROGRAM

Joseph “Chip” Hughes, Director



- ARRA Supplements
- Reapplication Process
- OSHA Projects – Latino Summit and 10/30 Project
- DOE Training Assessment and Collaboration
- Haiti Training Response
- Clearinghouse Contract
- Web Page, DMS and Curricula Catalog Updates
- Upcoming Meetings

Kathy Ahlmark
Program Analyst
WETB
Program Updates



For initial progress reports, the system will start accepting initial progress reports for HWWT, MWT and HDPT on April 1 and will close on June 1.

For DOE, the system will start accepting initial progress reports on April 1 and will close on July 1.

The ARRA data entry screen will be up in the next couple of weeks. You will have to fill out one form that asks for:

Employment within the organization

1. Number of employees hired by the awardee organization
2. Number of employees hired by the all the sub-awardee organizations
3. Number of consultants hired by the awardee organization

Employment outside of the organization

1. Number of students hired (trained with ARRA funds)

- If you have any technical issues or get error messages, please contact Lynn Albert albert2@niehs.nih.gov.
- We welcome any suggestions that would improve the functionality of the DMS and make it more helpful for you.

- Kathy Ahlmark ahlmark@niehs.nih.gov
- Ted Outwater outwater@niehs.nih.gov

Ted Outwater Public Health Educator/Program Administrator, WETB

Program Updates



DOE 4 Year Summary

**DEPARTMENT OF ENERGY
4 YEAR TRAINING SUMMARY
FOR BUDGET PERIOD 09/01/2005 - 08/31/2009**

Year	Total Courses	Total Workers	Total Contact Hours
2006	2,044	26,365	325,533
2007	2,283	34,074	402,635
2008	2,225	33,702	414,746
2009	2,265	36,266	530,271
TOTAL	8,817	130,407	1,673,185

WORKER EDUCATION AND TRAINING PROGRAM

**DEPARTMENT OF ENERGY PROGRAM
TOTAL TRAINING (ONE YEAR)
FOR BUDGET PERIOD 09/01/2008-08/31/2009**

AWARDEE	COURSES COMPLETED	WORKERS TRAINED	CONTACT HOURS
LABORERS-AGC EDUCATION AND TRAINING FUND	570	7,471	159,335
INTERNATIONAL BROTHERHOOD/TEAM/CHAUF/WHM	210	4,034	54,624
INTERNATIONAL UNION OPERATING ENGINEERS	124	2,022	27,692
UNITED STEELWORKERS OF AMERICA	189	2,844	32,750
INTERNATIONAL CHEMICAL WORKERS UNION	354	5,331	55,549
KIRKWOOD COMMUNITY COLLEGE	246	3,285	31,761
CPWR - The Center for Construction Research and Training	540	10,614	141,960
INTERNATIONAL ASSOCIATION FIRE FIGHTERS	32	665	26,600
TOTAL	2,265	36,266	530,271

**HAZARDOUS WASTE WORKER TRAINING
4 YEAR TRAINING SUMMARY
FOR BUDGET PERIOD 08/01/2005 - 07/31/2009**

Year	Total Courses	Total Workers	Total Contact Hours
2006	6,696	111,872	1,159,651
2007	7,848	131,037	1,425,059
2008	8,115	140,126	1,385,505
2009	8,297	149,247	1,455,548
TOTAL	30,956	532,282	5,425,763

WORKER EDUCATION AND TRAINING PROGRAM

**HAZMAT DISASTER PREPAREDNESS TRAINING
 4 YEAR TRAINING SUMMARY
 FOR BUDGET PERIOD 08/01/2005 - 07/31/2009**

Year	Total Courses	Total Workers	Total Contact Hours
2006	508	6,385	79,189
2007	653	9,095	99,623
2008	787	11,628	123,984
2009	701	12,267	111,772
TOTAL	2,649	39,375	414,568

WORKER EDUCATION AND TRAINING PROGRAM

The email you didn't get ...yet

- Dear Principal Investigator,
- As part of our joint responsibilities under our cooperative agreement, it is important to assure that all curricula prepared under the HWWTP, MWTP, HDPTP or DOE awards are uploaded into the curricula catalog maintained by the NIEHS WETP National Clearinghouse. It is particularly important at this particular time to finish these uploads. A review of curricula updates in your progress reports compared to what is in the curricula catalog shows the following:
 - INSERT
 - Please address these concerns **AS SOON AS POSSIBLE!**
 -
- Sincerely,
- INSERT Program Official

Sharon D. Beard

Industrial Hygienist, WETB

Curricula Issues

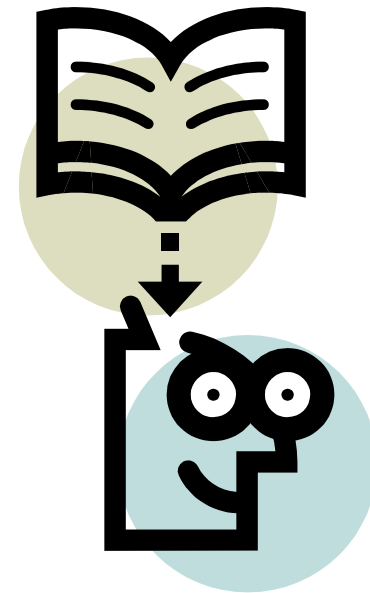
MWTP Update

Upcoming Meetings



- Remove outdated material
- Curricula must be approved by PI before submission
- Update name changes, partners in curricula
- All curricula and material must be 508 Compliant
- New courses and major modifications must have prior approval by NIEHS Program Staff

Reminders!!!!



NIEHS Minority Worker Training Program Fourteen-Year Summary of Training For Budget Period 09/01/1996-08/31/2009

Year	Students Trained	Placed in Jobs	Percentage of Students Placed in Jobs
1996	368	246	67%
1997	310	193	62%
1998	240	154	64%
1999	360	233	65%
2000	364	244	67%
2001	342	204	60%
2002	334	222	66%

**NIEHS Minority Worker Training Program
Fourteen-Year Summary of Training
For Budget Period 09/01/1996-08/31/2009**

Year	Students Trained	Placed in Jobs	Percentage of Students Placed in Jobs
2003	310	190	61%
2004	261	219	84%
2005	277	205	74%
2006	333	236	71%
2007	385	241	63%
2008	317	222	70%
2009	362	285	79%
Total	4563	3094	68%



- Green Trainer Enhancement in Portland, Oregon – Sept 2009
- 60 worker trainers
- Build it LEED - certification for contractors by Cascadia Chapter US Green Building Council (4 hour training)
- Current Workshops on
 - Sustainable Construction Safety and Health Rating System –Dr. Sathy Rajendran
 - Green Chemistry – Dr. Michael Wilson
 - How to incorporate green health & safety concepts into existing training



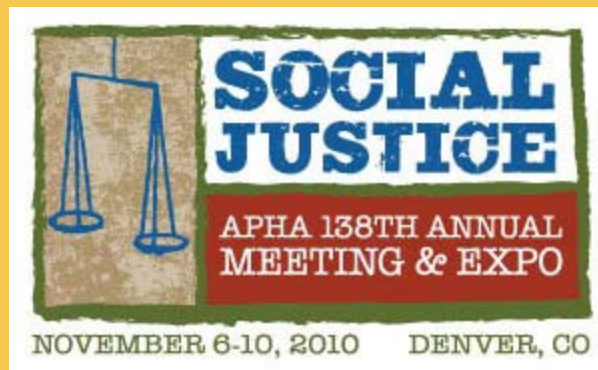
*CPWR – Center for Construction Research and Training

- Train the Trainer Program to train members of the Insulators' union on how to conduct energy audits by using the Insulation Energy Appraisal Certification Program (IEAP)
- MWTP –Expand their program to offer more students opportunities in green construction techniques and photo-voltaic industries
 - Cities targeted are New Orleans, LA; St. Paul, MN; Los Angeles, CA; and East Palo Alto, CA
 - Includes a 40-hour introduction to green building and weatherization training being piloted in New Orleans, LA

*3U45 ES006185-19S1 -- Worker Health and Safety Training Cooperative Agreement – Stafford, Erich J

WORKER EDUCATION AND TRAINING PROGRAM

- **2010 Good Jobs/Green Jobs** Washington, DC May 4-6, 2010
- **National Action Summit for Latino Worker Health and Safety** Houston, TX April 14-15, 2010
- **Inaugural PEPH Grantee Meeting** NIEHS, RTP, NC April 26 & 27, 2010
- **Brownfields 2011** Philadelphia, PA April 3-5, 2011



OHS Abstract Deadline Is Feb 5, 2010

Save the Date!!!



Inaugural PEPH Grantee Meeting
NIEHS| Research Triangle Park, NC
April 26 & 27, 2010

<http://www.niehs.nih.gov/PEPH>

Inaugural PEPH Grantee Meeting

Session #1: Community Participation in Research: Insuring research leads to a public health action

Session #2: Building the capacity of all research partners

Session #4: Assessing cumulative and synergistic exposures and measuring their impacts

Session #5: Risk communication: key messages, research and uncertainty



NIH Update – January 2010



Reminders for ARRA Administrative Supplements

- Need to accommodate the “separation” and accountability required by ARRA while maintaining a programmatic connection to the parent grant
 - ARRA T-3 budget/projects periods reflect that of the T-3 only and not the parent
 - ARRA T-3s issued in FY2009 may be for a single budget/project period.
 - Specific information on ARRA additional funding must be included in annual progress report of the parent grant.
- No-cost Extensions of ARRA-funded T-3s
 - ARRA T-3s are awarded under NIH Terms of Award and therefore are eligible for a one-time no-cost extension
 - This is separate from the parent record



Administrative Supplements & Competing Revisions (cont.)

- No “co-mingling” of ARRA T-3 and parent grant \$\$\$ allowed (assuming parent grant funded with regular appropriation \$\$\$)
 - Separate institution accounts and PMS drawdowns
 - No rebudgeting between parent and ARRA T-3
 - No carryover of ARRA T-3 balances into the parent
- Separate Financial & Closeout Reports Required



Administrative Supplements Reporting

- The NIH ARRA grantee reporting response rate was 99.2%; overall HHS expected 17,392 reports with 11,900 from NIH grantees. Reports are centrally reviewed by OER and some have been flagged for errors such as incorrect dates or award amounts, excessive jobs, or reported expenditures over the amount awarded. NIH reports results to HHS, which reports to the Recovery Act Board. At this time we have no guidance or feedback on enforcement actions to be taken.
- NIH has downloaded the 1512 reports and is considering making the data available to the ICs on an intranet site. If POs have concerns about progress they should review the 1512, and if necessary follow-up with the grantee.



Implementation of the Federal Financial Report (SF-425)

Federal Financial Report is a

- Consolidation of the Financial Status Report (FSR or SF 269/269A) and the Federal Cash Transaction Report (FCTR or SF 272/272A) into single form.
- At this time NIH has asked OMB to extend approved use of the SF 269.
- Effective January 1, 2010, NIH grantees are to report cash transaction data via PMS using the FFR.
- First quarter fiscal year 2010 reports for period 10/1/2009-12/31/2009, must be filed by January 30, 2010
- FFR replaces the use of the FCTR.
- Until notified, NIH grantees should continue to use the eFSR system to report expenditures.



Revised Progress Report

- Use required as of 10/01/2009
- eSNAP changes released 10/09/2009
- Policy changes:
 - All Personnel Report (PD/PIs & all > 1 person month)
 - Biosketch (peer review initiative change)



Audit Requirements

All NIH Grantees that expend \$500,000 or more within a year in Federal awards are subject to an audit requirement.

- Audits are due within the earlier of 30 days after receipt of the auditor's report(s) or 9 months after the end of the grantee's audit period.
- Grantees delinquent in submitting audits risk the imposition of sanctions and potential loss of Federal funds.



Closeout Final Reports

*Grantees are **strongly encouraged** to submit closeout documents electronically through the eRA Commons!*

- Documents are due within 90 days of project period end date
 - Final Financial Status Report (now required electronically)
 - Final Inventions Statement & Certification
 - Final Progress Report
- Grantees must ensure that there are no discrepancies between the final Financial Status Report (SF-269 or 269A) and the Payment Management System's Federal Cash Transaction Report (SF-272).
- Failure to submit timely reports may affect future funding to the organization!

More at: <http://grants.nih.gov/grants/guide/notice-files/NOT-OD-09-128.html>



NIH Centralized Processing Center

- Centralized office accepts receipt of all non-financial, paper-based closeout documents
 - Final Progress Report
 - Final Invention Statement and Certification
- If not using eRA Commons, mail to the Central NIH unit at:
 - NIH Centralized Processing Center
 - 6705 Rockledge Drive, Room 2207, MSC 7987
 - Bethesda, MD 20892-7987 (for regular or US Postal Service Express mail)
 - Bethesda, MD 20817 (for other courier/express mail delivery only)



Profile Maintenance

- PIs have an obligation to keep information in their Personal Profile current.
- Profile data used in other electronic processes (e.g., Summary Statements, eNotifications)
 - Degrees
 - Position Titles
 - Addresses - e-mail & postal





Summary of Helpful NIH Web Pages

- Office of Extramural Research (OER) Web Page
<http://grants.nih.gov/grants/oer.htm>
- NIH Searchable Database of RFAs, PAs, and Guide Notices
<http://grants.nih.gov/grants/guide/index.html>
- NIH Grants Policy Statement (Rev. 12/03)
http://grants.nih.gov/grants/policy/nihgps_2003/index.htm
- NIH Extramural Nexus – Monthly newsletter (previously bimonthly) for the extramural community
<http://grants.nih.gov/grants/nexus.htm>
- RePORTER - Search to analyze an Institute's portfolio of funded projects, research areas, and more
<http://projectreporter.nih.gov/reporter.cfm>
- Grant Application Basics
http://grants.nih.gov/grants/grant_basics.htm



NIH OER Listserv Addresses and Instructions

- eSubmission:
 - <http://era.nih.gov/ElectronicReceipt/listserv.htm>
 - Separate listservs available for scientists and administrators
- NIH Guide for Grants and Contracts:
 - <http://grants.nih.gov/grants/guide/listserv.htm>
 - The official publication for NIH medical and behavioral research Grant Policies, Guidelines and Funding Opportunities



Grants Information: Who to Contact!

- **Institutional Resources** – First, utilize the expertise of your organization's ***Office of Sponsored Programs, Grants and Contracts, Business Office***

Application Specific Questions

- **Administrative** - Contact the Grants Management Specialist at the awarding Institute/Center
- **Scientific/Programmatic** - Contact the designated Program Official/Director at awarding Institute/Center
- **Review Questions** - Contact the assigned Scientific Review Officer



Thank You!

**Any Questions—Please hold for
Breakout Session**