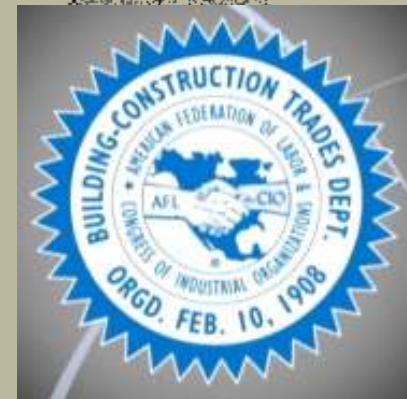


The Center to Protect Workers' Rights



Health & Safety
Research & Training



501(c) (3) not-for-profit safety and health research and training arm of the BCTD

Largest safety and health operation in the labor movement

Over 40 full-time staff conducting research and managing training.



CPWR's funding

CPWR is funded almost entirely through Federal grant programs

CPWR has an annual operating budget of approximately \$15 million

CPWR's program consists of 3 major components:

- Research (NIOSH)

- Training (NIEHS – EPA & DOE)

- Medical screening programs (DOE)



BCTD / AFL-CIO

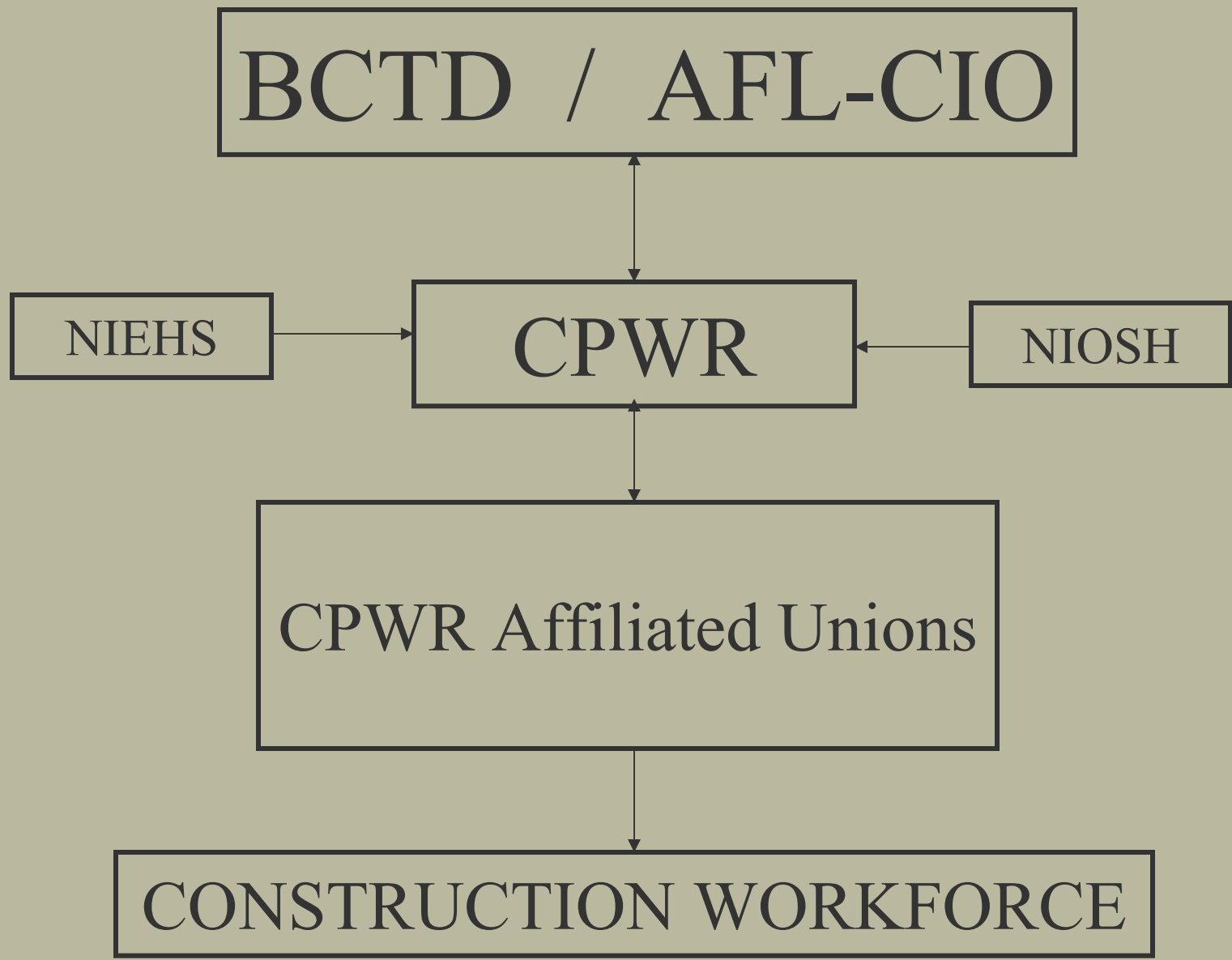
NIEHS

CPWR

NIOSH

CPWR Affiliated Unions

CONSTRUCTION WORKFORCE





Asbestos Workers & Insulators

Boilermakers

Bricklayers

Carpenters & Joiners

Plasterers & Cement Masons

Electrical Workers

Iron Workers

Painters

Plumbers & Pipe Fitters

Roofers

Sheet Metal Workers



COURSE TYPE

HOURS

COURSE TYPE	HOURS
Hazardous Waste Worker	40 hours
Hazardous W. Worker Refresher	8 hours
Confined Space	16 hours
Asbestos Worker	32 hours
Asbestos Contractor / Supervisor	40 hours
Asbestos Refresher	8 hours
Lead Worker	32 hours
Lead Contractor / Supervisor	40 hours
Lead Refresher	8 hours
MSDS Hazard Communication	8 hours
OSHA Const. Train-the-Trainer	40 hours
OSHA Gen. Ind. Train-the-Trainer	40 hours
OSHA Gen. Const. Safety Training	10 hours
OSHA Gen. Ind. Safety Training	10 hours



CPWR's activities with DOE

- Training in 2003
 - 399 courses nationwide
 - 5,536 workers trained
 - 59,200 contact hours
- Developing Curriculum
- Training Instructors





Training construction workers

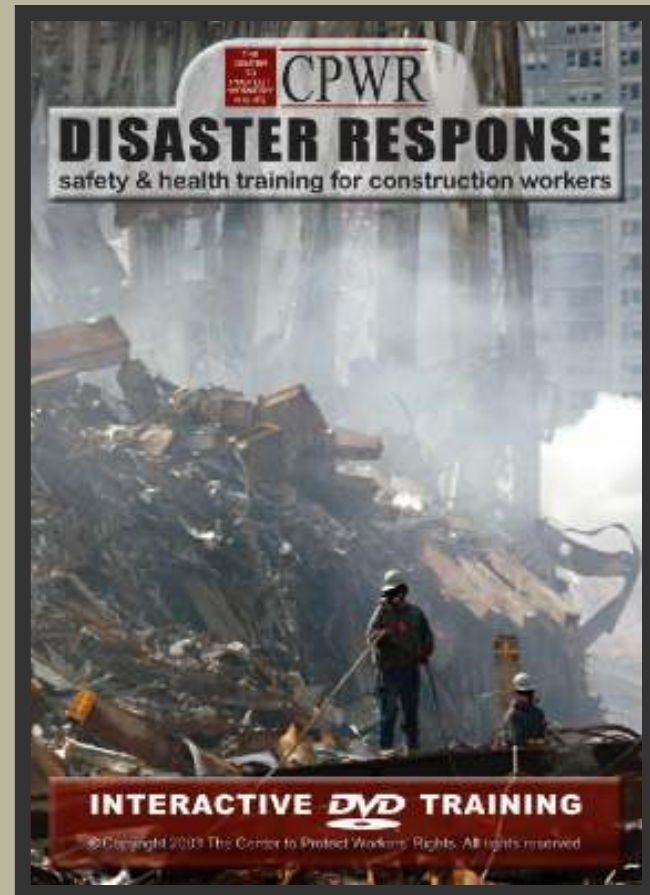
- At HAMMER
 - Active workforce
- Near DOE facilities
 - Active workforce
 - Former / future workforce
- Outside the DOE
 - Curriculum extends to the Building Trades



Disaster Response Training

New training initiative based on lessons learned from 9/11

Incorporates lessons learned from DOE





Medical Screening Programs

For BCT workers exposed to hazards during past work at DOE sites

Programs include

Hanford

Oak Ridge

Savannah River

Portsmouth

Paducah



Medical Screening Programs

- Notices have been sent to 65,000+ workers, 8,500 were contacted
- In-depth interviews have been conducted
- 7,500 have completed screening



Medical Screening Programs

Findings:

Most workers believe their work at DOE has resulted in harmful health effects

1/2 of workers examined have x-ray evidence of lung damage

Beryllium exposure has been identified by this program

Large number of workers have serious medical problems, 420 cases of cancer, 40 of thyroid disease



Silicosis Screening Program

- In cooperation with the University of Cincinnati
- For current and former workers at Yucca Mountain Project in Nevada
To protect workers involved in tunneling and underground operations & at Exploratory Studies Facility from 1992 to present



EEOICPA

- CPWR has offered to help DOE with the compensation plan, unsuccessfully
- CPWR can produce employment evidence for construction workers
- DOE has not be able to locate employment records
- CPWR uses union dispatch records, pension fund records, other union records



DOL

CPWR is currently working with DOL to help provide evidence of employment for construction workers, under subpart B of EEOICPA.