

Laborers-AGC Education and Training Fund

**EPA and DOE
Environmental Worker
Training and Education
Programs**

EPA /DOE

Consortium/Contractual

Training Providers

- **22 regional training sites (EPA)**
- **7 regional training sites (DOE)**
- **3 mobile units**
- **12 special service providers**
- **International Brotherhood of Teamsters**

Contractual Assistance

- **Training providers conduct courses**
- **Planned training based on projected work available, site history, and special needs**
- **Other contractual provide special services**
- **External resource needs are determined by special projects, support services, and quality control**

Contractual Management

Administrative

- Award/Workplan
- Agreements
- Policy Manual
- Annual Training
- Financial Status Reports
- Internal Audits
- TRAC/Data

Programmatic

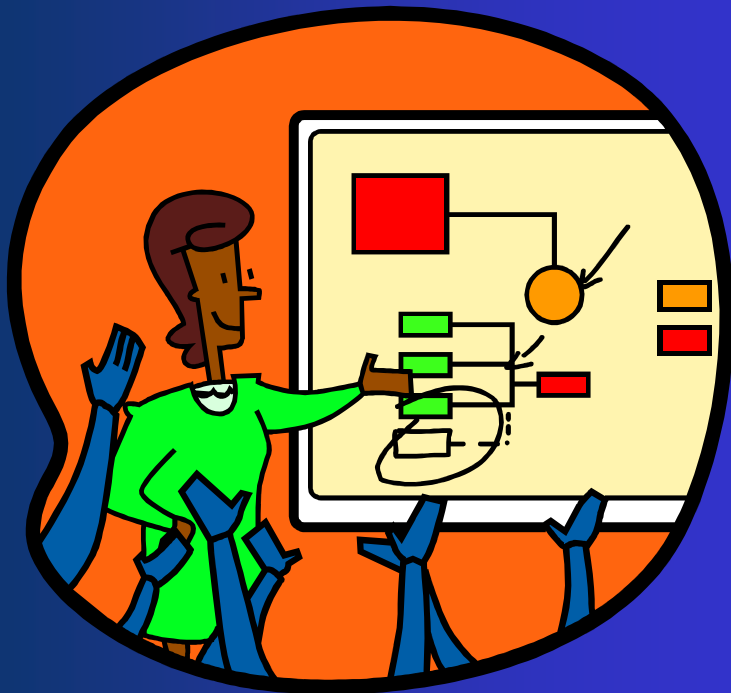
- Workplan
- Policy Manual
- Minimum Criteria
- TTT and IDP
- Monitoring
- Evaluations
- HW Refresher Survey
- Technical Assistance

Agreement Letters

- Legal document
- Services
- Governing rules
- Budget
- Time frame



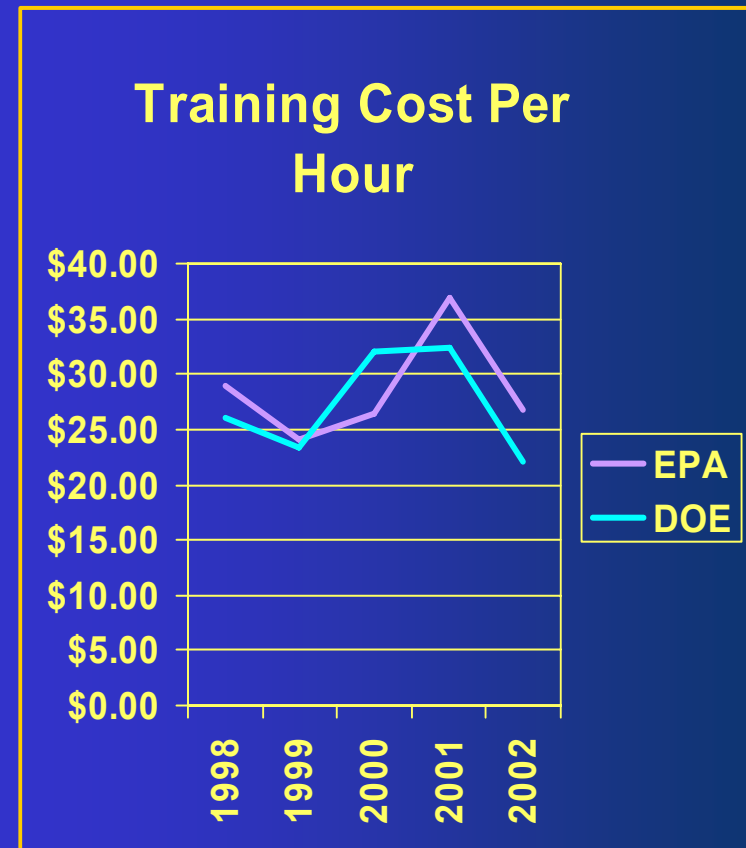
Policies



- Policy manual
- Administrative meeting
- Site visits
- New directors meeting

Financial Reporting

- Reimbursement requests
- Supplies
- Financial status
- Internal audits



Training Data



- Course applications
- HW Refresher Survey
- TRAC
- Job sites

Programmatic Policies

Policy Manual

Guides what can be done and how it is done

Minimum Criteria

Establishes quality guidance

Medical Professional Orientation and Policy Manuals

HW Advisory Board and QA/QC Committee

Instructor Training

- **Train-the-Trainers**
- **IDP**
- **HW and Radiological Instructor Refreshers**
- **LaborersLEARN**

Program Evaluations



- **Course/instructor evaluations**
- **Peer reviews**
- **HW Refresher Surveys**
- **Monitoring**
- **Technical assistance**

QA/QC Program

EWTEP Monitoring Plan

